

# SIGNMAKING



This portfolio features a series of products I have created during my time at FASTSIGNS, New Orleans as their Designer/Router & Engraver Operator. Utilizing both the Epilog M2 Fusion 120 Watt Laser Cutter/Engraver and the Vision 2550 CNC Router, I was tasked with creating signage and marketing materials that ranged from small, indoor ADA signs all the way to large custom-made dimensional lettering.



1.



2.



3.



4.

## Le Meridien Hotel

Le Meridien Hotel in Downtown New Orleans had a valet sign fall into disrepair, and rather than replacing the entire sign we were tasked with refurbishing it in a small window of time.

1. Damaged aluminum lettering was removed from the sign face, followed by a light sanding and cleanup.
2. Black cut vinyl was wrapped around the sign face. This rejuvenated the original black color without the need for a paint job.
3. A laser cut paper pattern was mounted to the sign face for assembling the dimensional lettering
4. 1/2" Thick laser cut white acrylic lettering was assembled to the sign face using ASI chemical weld, resulting in a beautifully refurbished sign.

*Le* **MERIDIEN**  
**NEW ORLEANS**

1.



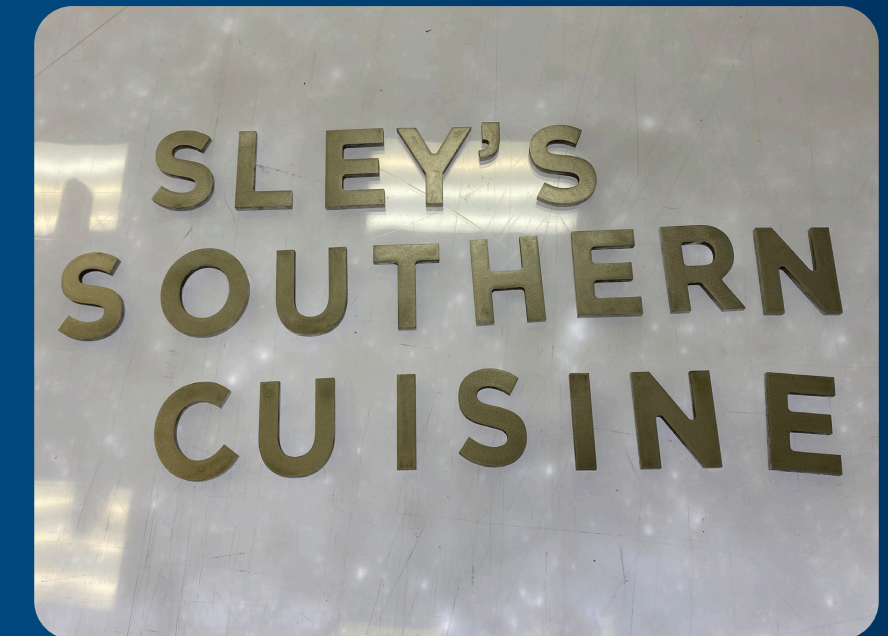
2.



3.



4.



## Custom Logo Signs

1. **Utopian:** : Laser cut hand-painted PMS color-matched lettering, assembled to an aluminum face using ASI chemical weld. (5' x 3')
2. **CubeSmart:** Routed PVC, installed directly to the wall using VHB tape. (Approx. 10" tall lettering)
3. **Reliant:** Laser cut acrylic lettering, routed frosted acrylic sign face, and aluminum standoffs assembled using acrylic weld. (4' x 2')
4. **Sley's:** Routed 1/4" thick mill finish aluminum, complete with tapped and hand-threaded holes for 10-24 studs. (5" tall lettering)

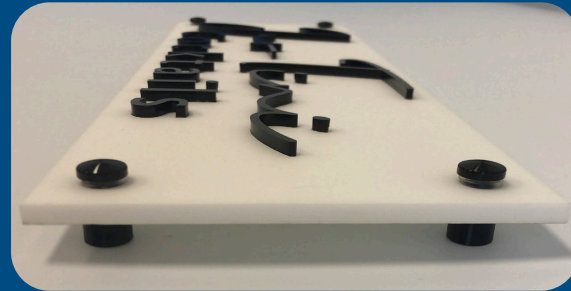




1.



2.



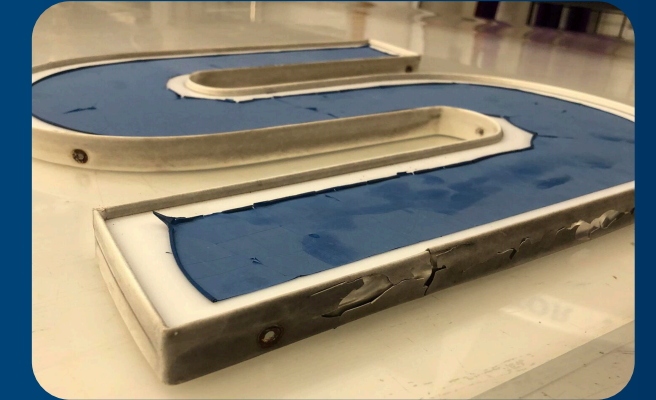
3.

## Custom Logo Signs

- 1. The Business Bar:** 1/2" Thick laser cut acrylic, standing at 8" tall per letter, assembled to an ACM face using ASI chemical weld. (8' x 1')
- 2. Jus Tini Cocktails:** 1/4" Thick finely laser cut acrylic logo assembled to an opaque white acrylic blank. The blank had to be engraved pre-assembly in order to create a notch for the thin lettering to weld into using acrylic weld. (18" x 6")
- 3. B. Dazzle Hair Studio:** 1/8" Thick Laser cut LASERMAX, a faux aluminum substrate. Assembled to a gloss black acrylic face using acrylic weld. Complete with 1" aluminum standoffs. (5' x 3')



1.



2.

## Custom Logo Signs

- 1. Lake Terrace:** 1/4" Thick laser cut acrylic lettering mounted to white Lexan, installed into a cabinet sign located at the neighborhood's entrance. (Approx. 7' x 5')
- 2. FASTSIGNS:** We were tasked with the refurbishment of our storefront channel letters, which including stripping the old vinyl graphics from the letter faces and re trim capping them using Jewelite. After assembly, the letters were installed onto the cabinet using our 40-foot boom bucket truck. (12' x 1')







1.



2.



3.



4.

## Laser Engraveables

The Epilog 120W Fusion Laser was capable of performing finely detailed engravings at high speeds

1. Powder coated key chains engraved with icons and custom text.
2. Powder coated tumbler mug engraved with a custom icon
3. Rosewood piano finish floating acrylic plaque engraved with a company logo and text.
4. Alder infinity edge plaque engraved with text



1.

## Router Engraveables

The VISION 2550 CNC Router was capable of deep engraving into dense materials such as metal and acrylic at relatively high speeds



2.



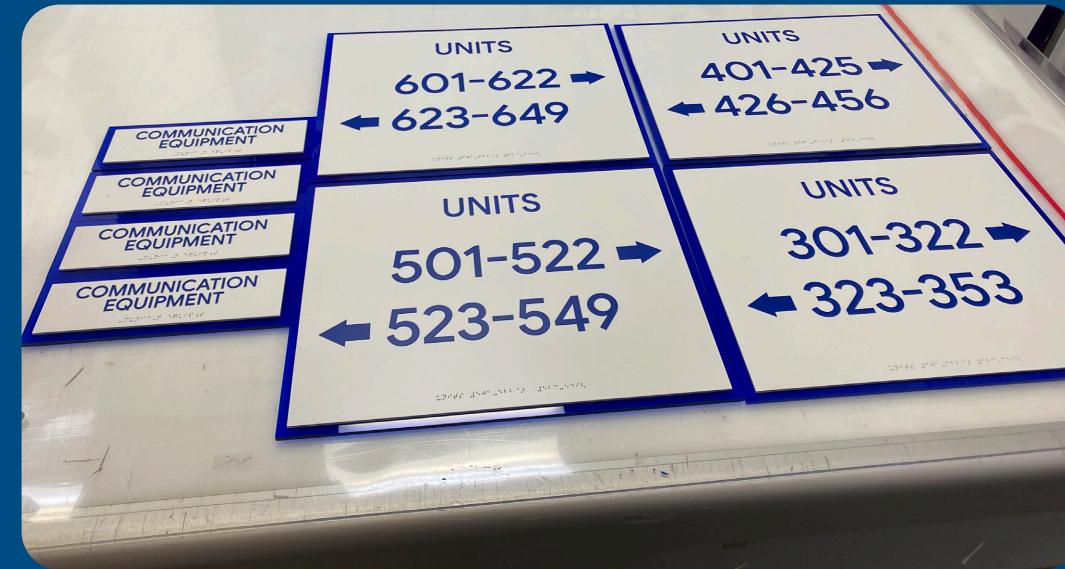
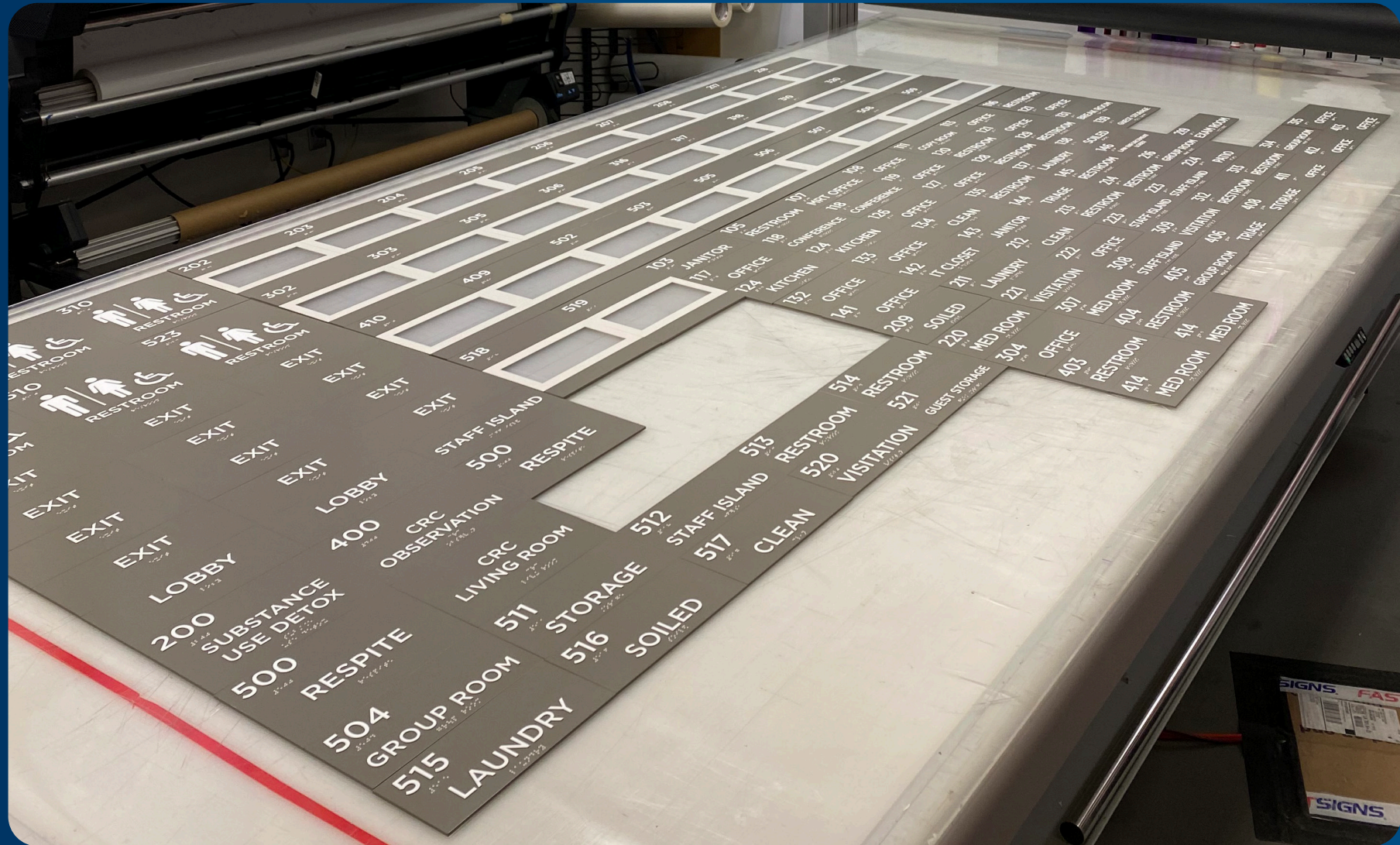
1. Custom back lit LED acrylic logo signs. These signs were reverse engraved on the router and mounted to LED enabled aluminum housings to provide a back lit, ghost effect to the logo. (4 ft. x 2 ft.)
2. Aluminum door signs were engraved with text and paint-filled with black enamel paint. Complete with nail holes for installation



1.



1.



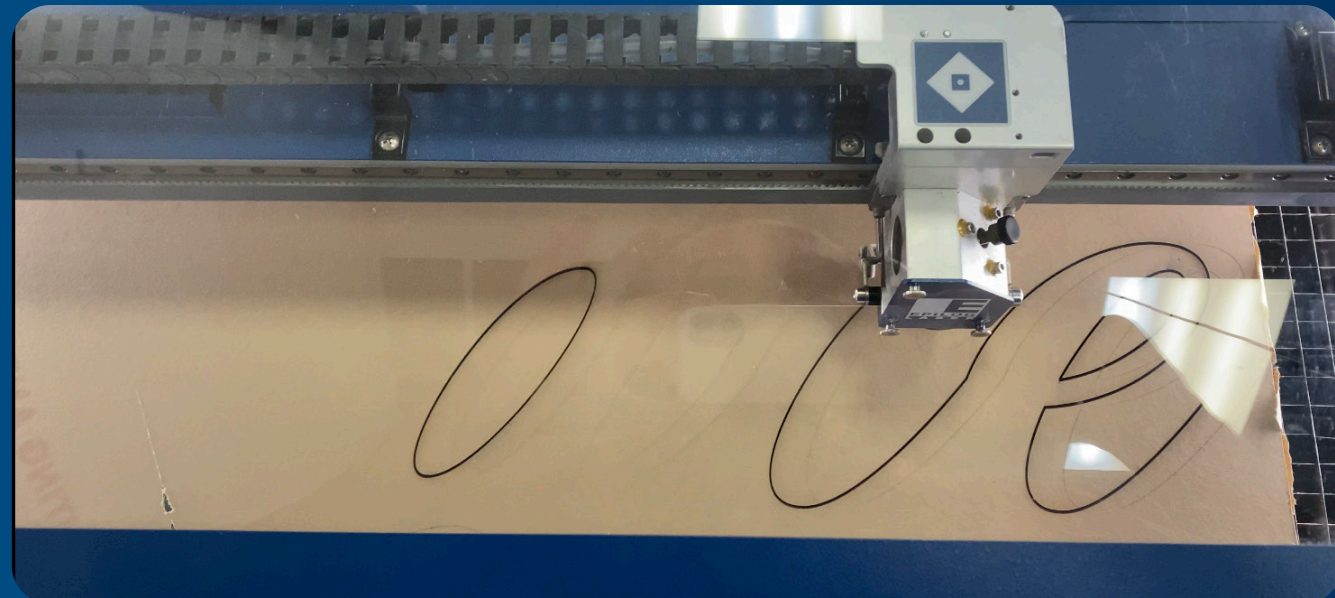
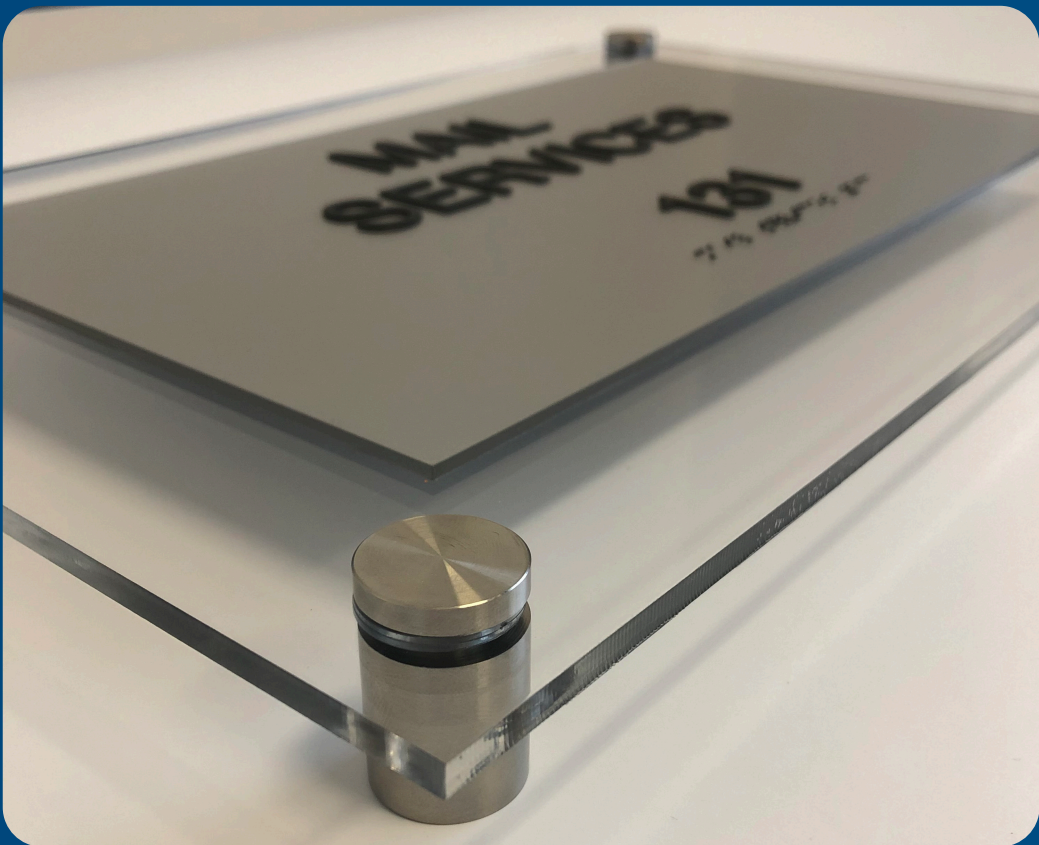
## ADA Signage

Creating custom ADA Signage is the main responsibility of my position. All ADA signage has to be made in accordance with exact specifications set forth by the ADA, with the inclusion of Grade II Raster Braille.

1. Left: The largest ADA job to date. Totalling at 127 Signs, it included room signs, restroom and utility signs, and even window signs with routed inserts for name cards.
2. Other examples of custom ADA signage, including window slots and school logos.







**Thank you** for taking the time to view my work. If you would like to learn more, please visit my website at [www.svzdesign.net/](http://www.svzdesign.net/) or feel free to contact me using the information found below.

"Design is as much a matter of finding problems as it is solving them." — Bryan Lawson, Author, Architect and Scholar

Stevie Van Zandt



