



Stevie Van Zandt
Industrial Design Portfolio

stevievanzandt27@gmail.com
<https://www.svzdesign.net/>
(985) 276 - 8402

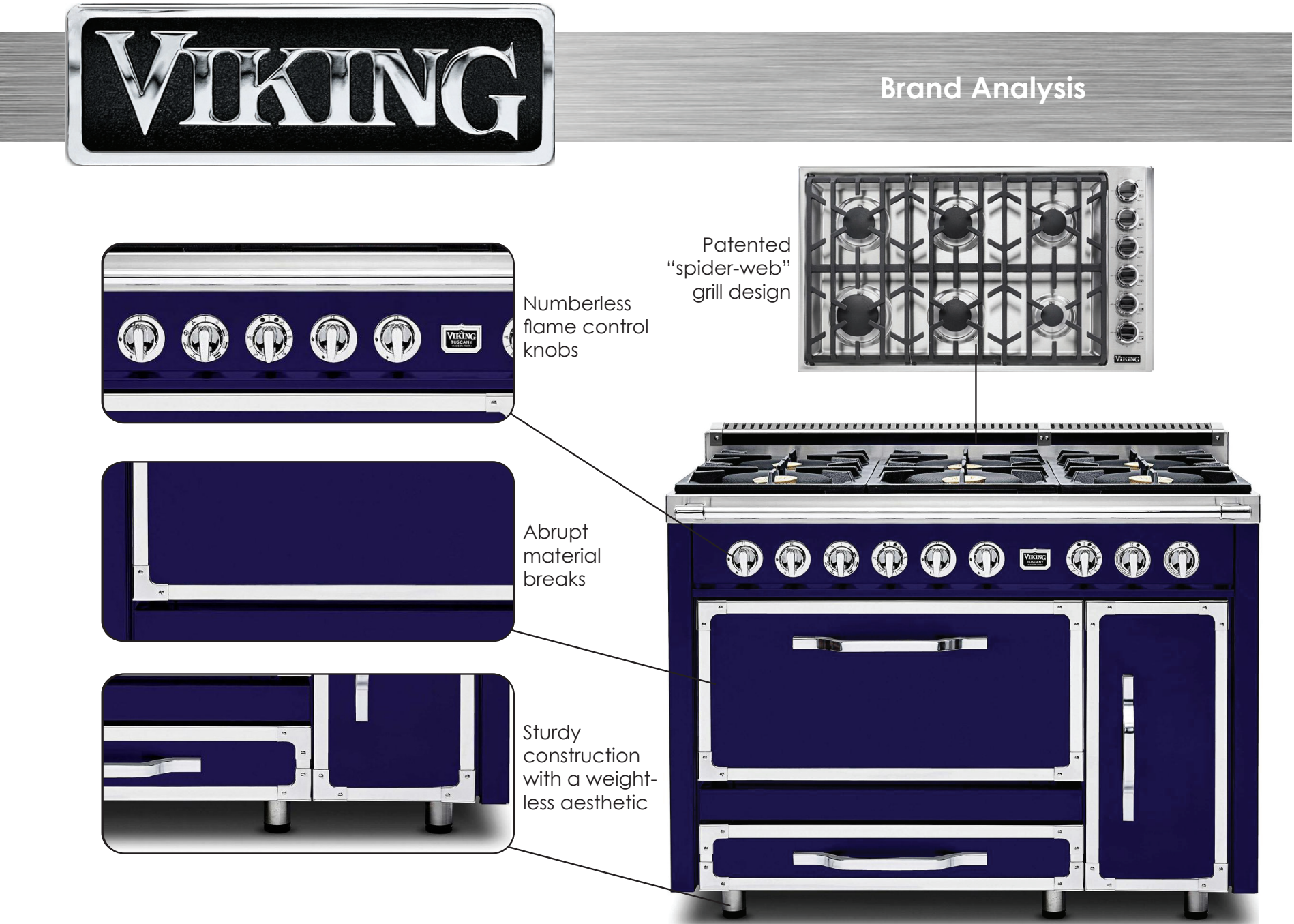
About Me

Thank you for taking interest in my work. The following is a compilation of products I have designed over my years of study. As a designer, I make it my goal to explore the possibilities of products we use everyday and push the boundaries of their capability, functionality, and aesthetic.



Brand Analysis

analyzing VIKING's brand language and aesthetics allowed certain elements to be incorporated



Design Goals

analyzing the brand, task, and technology of modern single-serve blender led to the following goals for the redesign



Functionality - reversing the blender cup to allow for quicker use and less cleanup



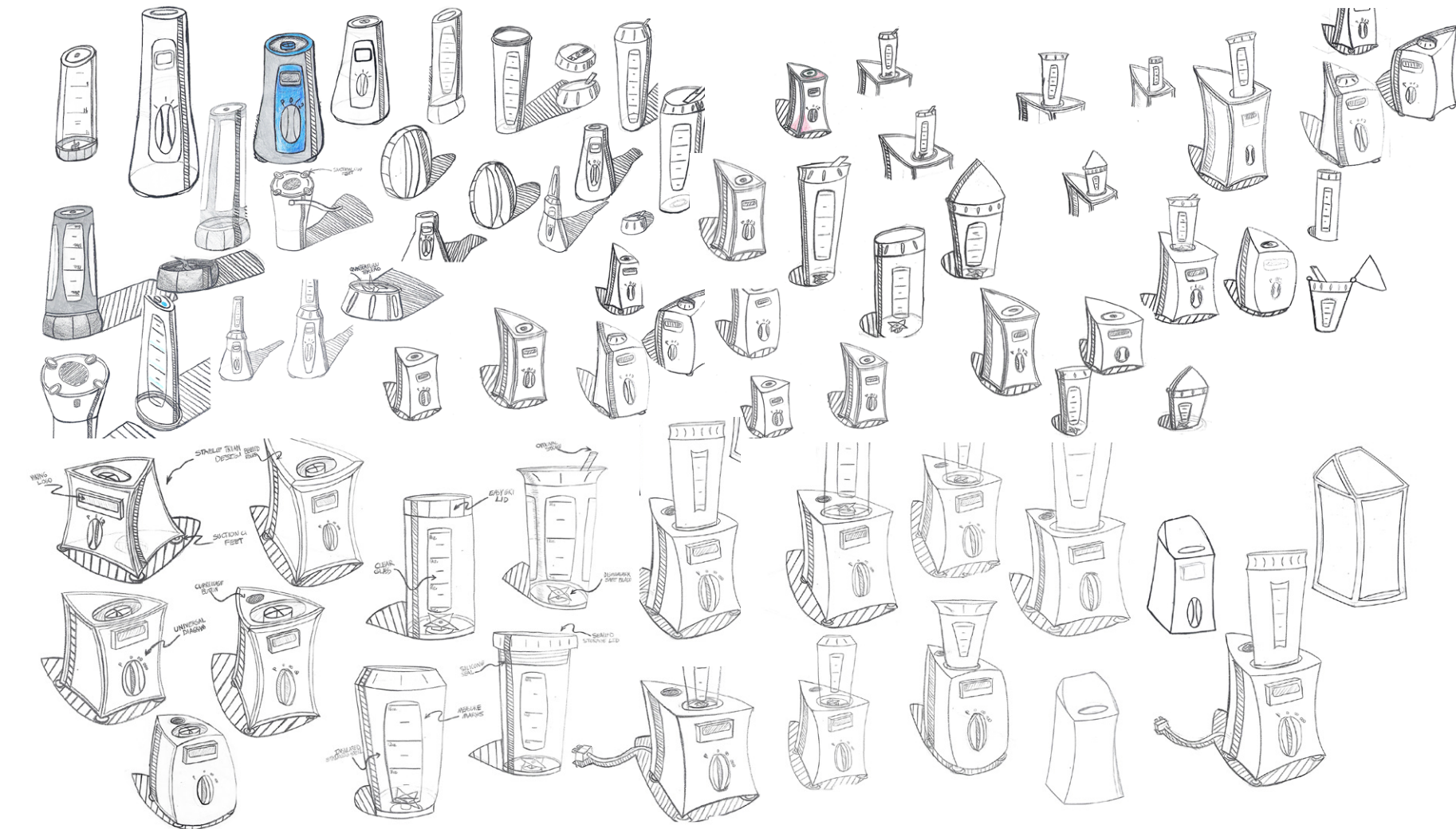
Simplicity - incorporating VIKING's simple yet elegant design language



Rapidity - redesigning the single-serve blender for an on- the-go lifestyle

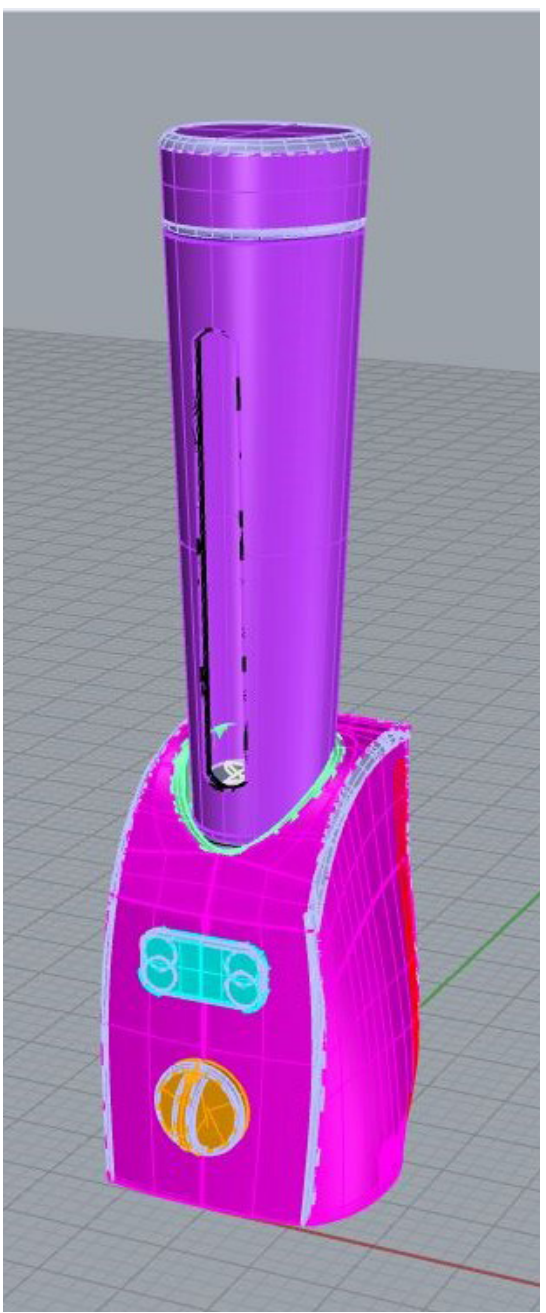
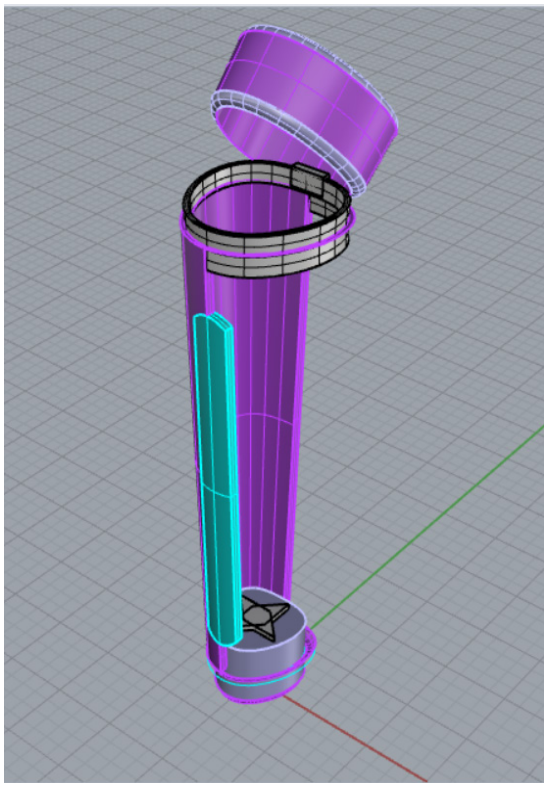
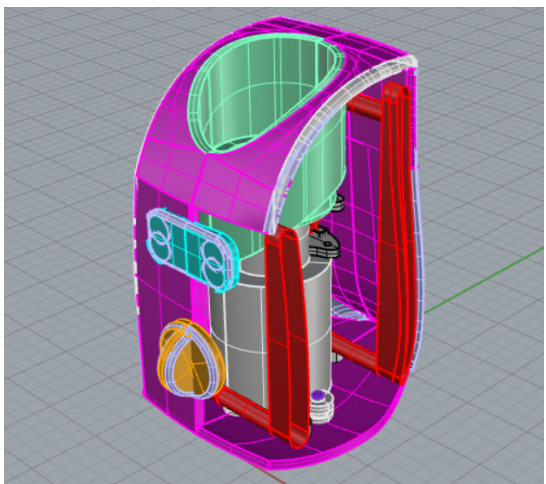
Ideation Sketching

exploration into various forms and functions of single-serve blenders

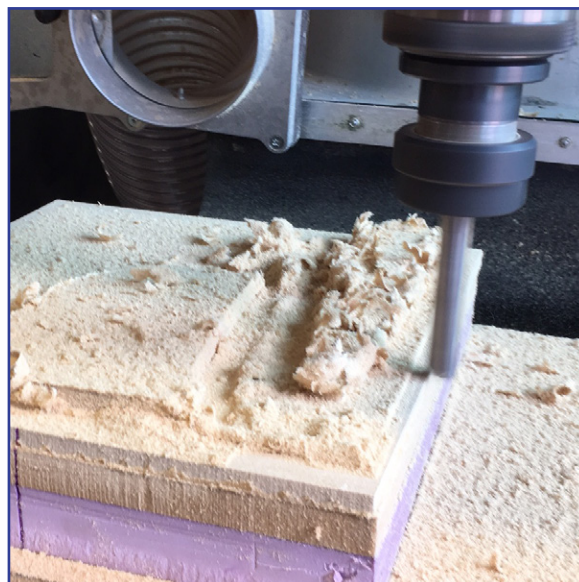
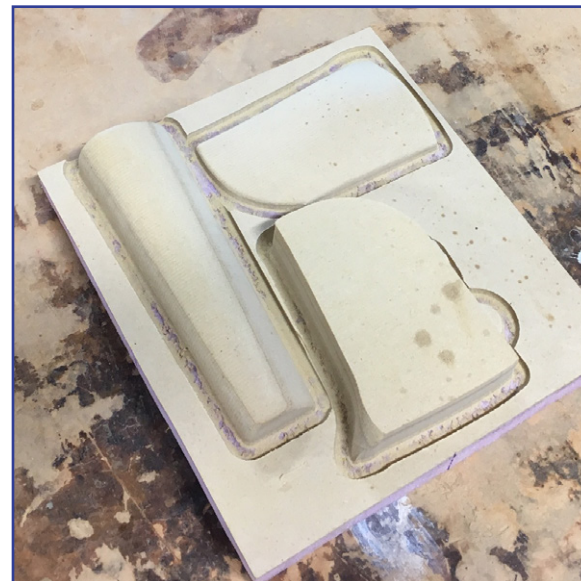
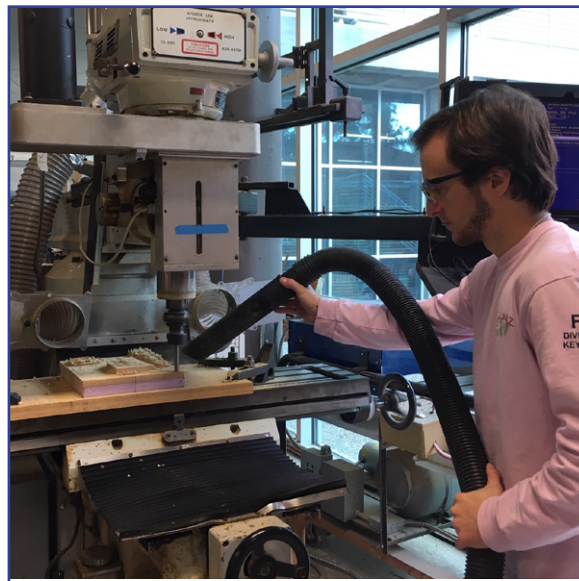


Process Modeling

wood modeling using the cabriole method and 3D Rhinoceros Modeling



C&C MILLING AND FINAL MODEL PROCESS
3-Axis milling and surfacing of the physical model



Final Models
physical and digital product models



PROWLER GX40

Automated Mowing System

25%

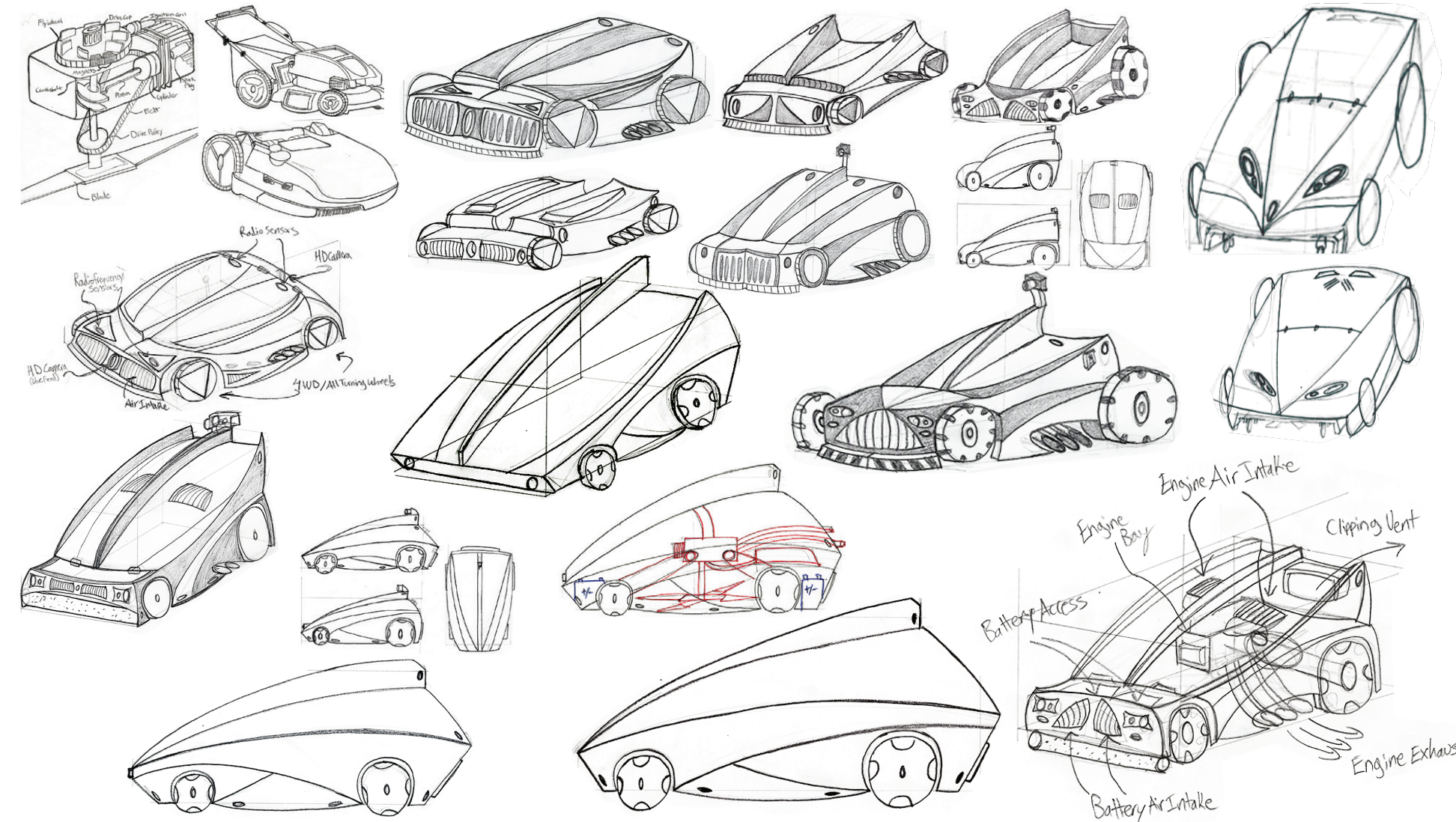
Over 25% of landscape worker fatalities take place in dangerous areas such as roads and highways

\$\$\$

The landscaping and grounds-keeping industry produces 51 trillion dollars in revenue a year, with the average hourly rate of 14.88 per worker



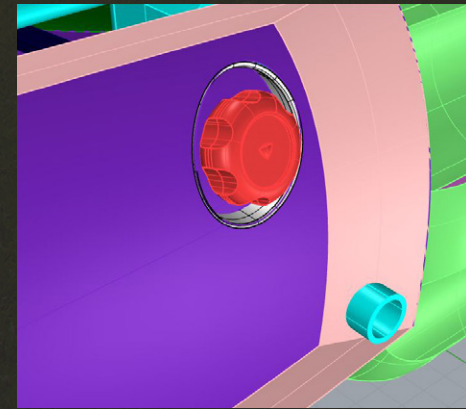
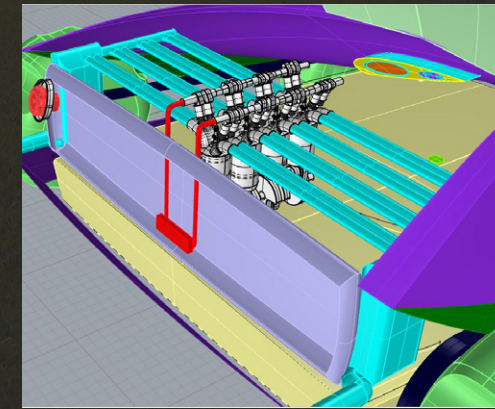
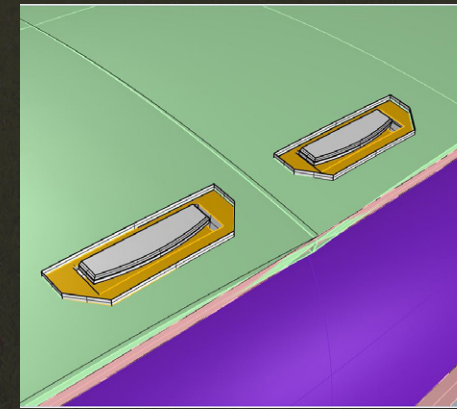
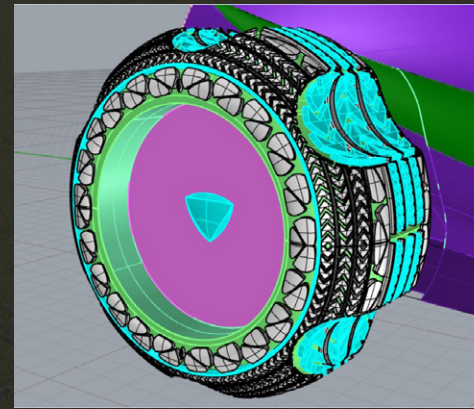
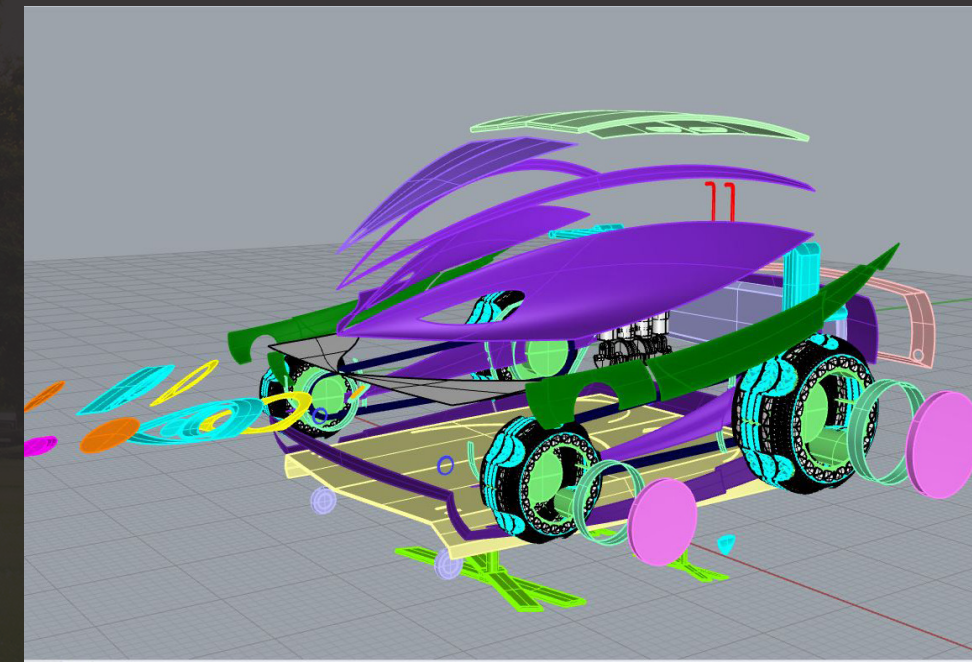
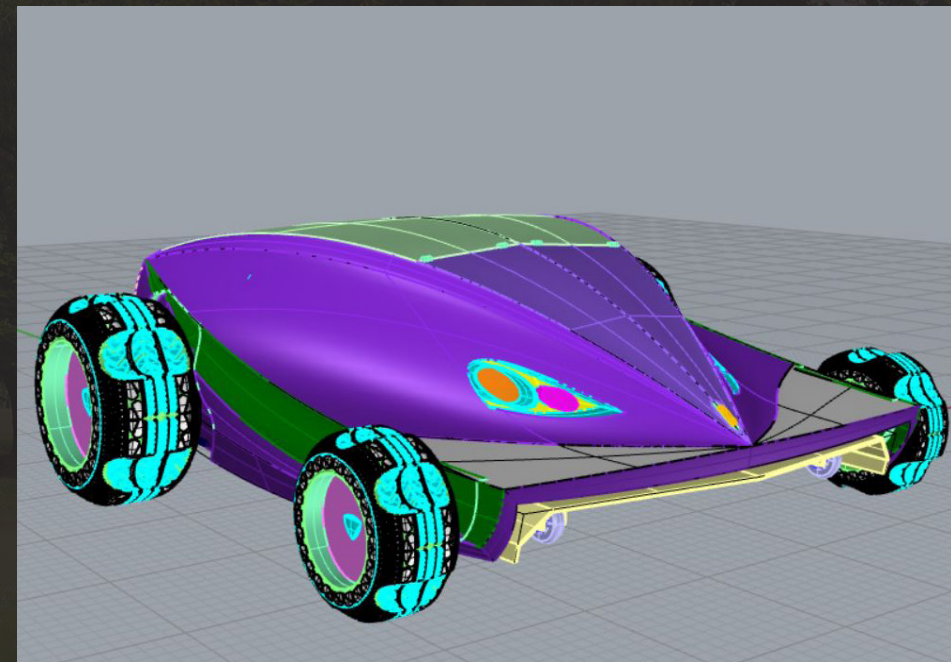
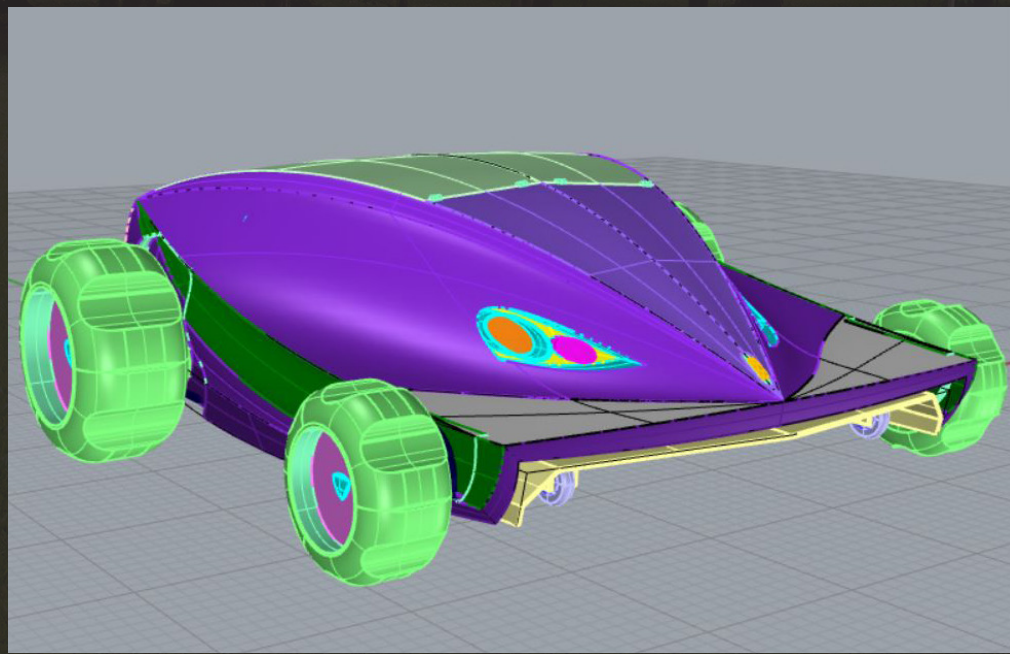
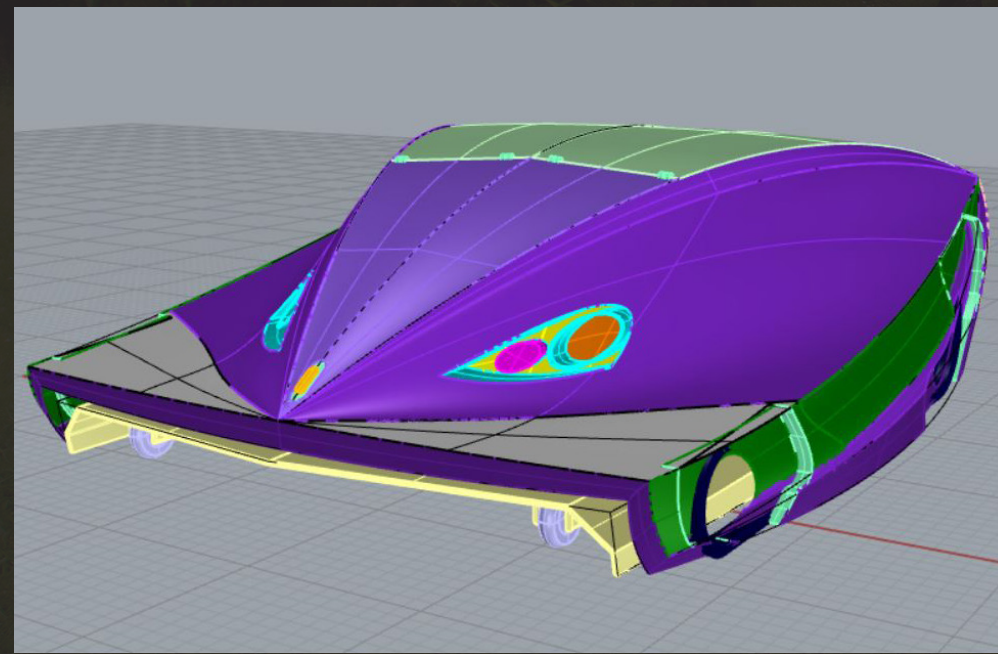
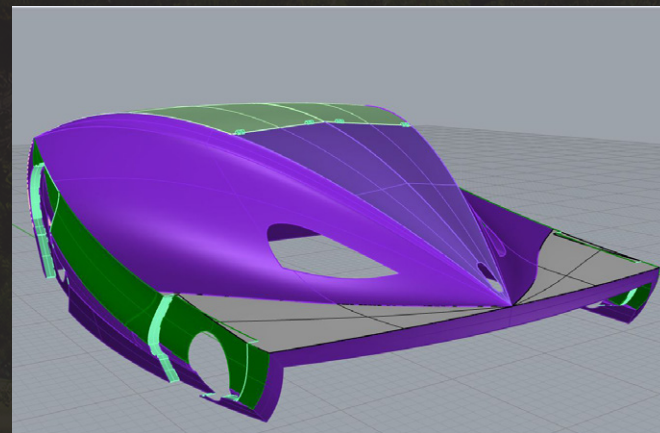
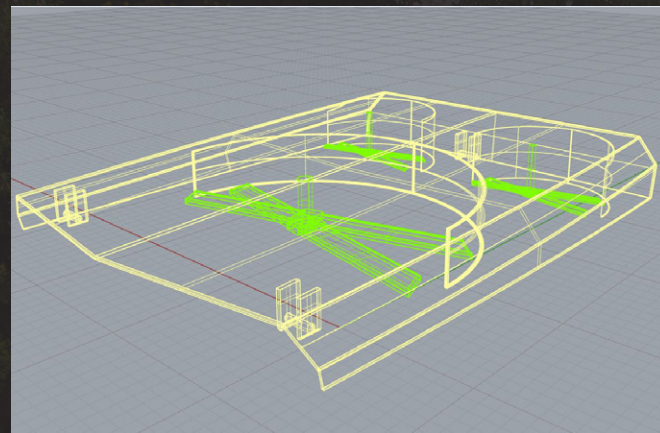
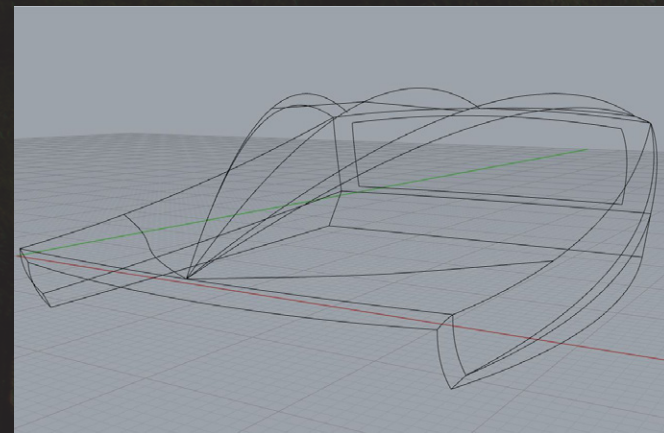
PROWLER GX40 provides an efficient, modernized solution that allows workers to maintain their jobs without the risk of injury



SKETCHING

The first step in developing the design involved perspective ideation sketching that included studies of current automated and conventional lawnmowers, along with exploration into the mower's form and aesthetic appeal

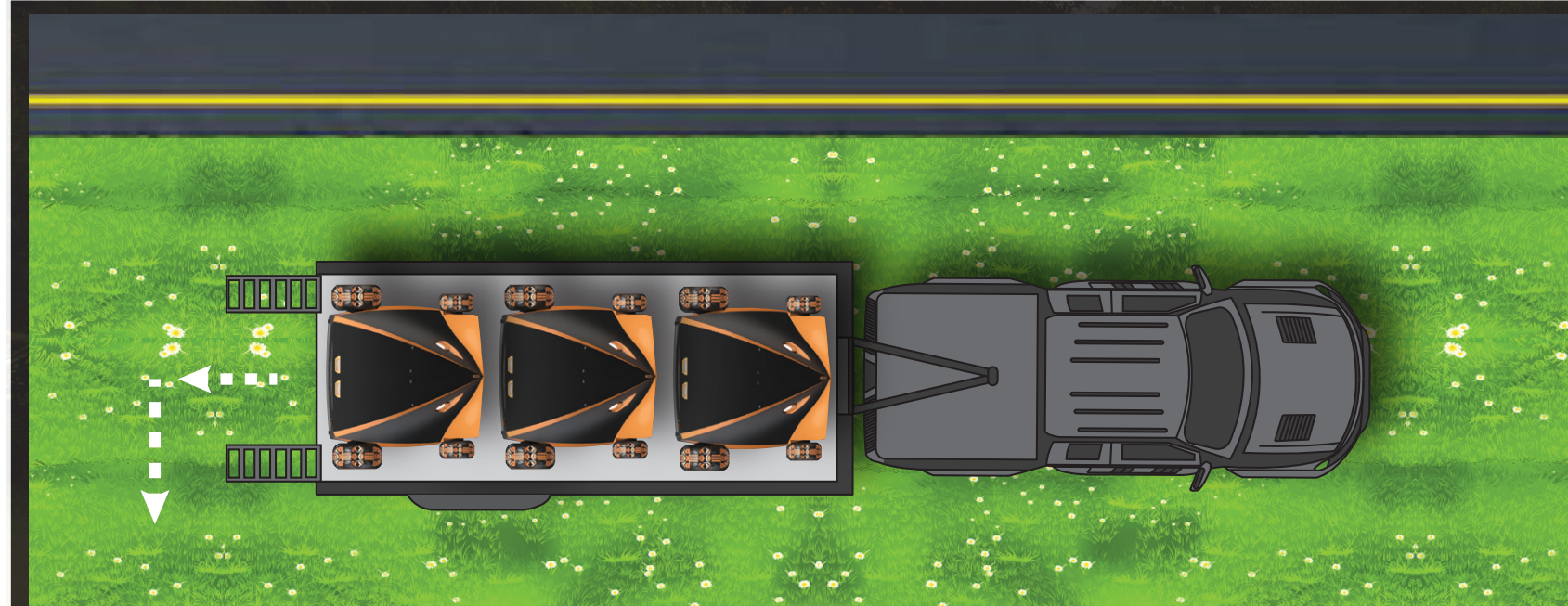
3D MODELING



Digital modeling began by developing generation curves using my ideation sketches. This developed a body shell along with a mowing deck and blades. Further details such as headlights, cameras, and sensors were then added

In addition, details such as tire treads, a catalytic conversion exhaust system, fuel tank and pump along with a fuel cap resulted in a thorough, complex yet functional model

SYSTEM DEPLOYMENT



PROWLER GX40 is large enough in size to cut vast areas efficiently, but small enough to travel easily

Fleets would be delivered at the location and automatically deploy from the trailer upon the technician's approval

The technician would then park in a safe location, overseeing the mowers with GPS locating and P.O.V. live camera feed sent straight to their vehicle

PROWLER GX40 would cut until finished, and at that time automatically return to the trailer

SYSTEM FUNCTIONALITY



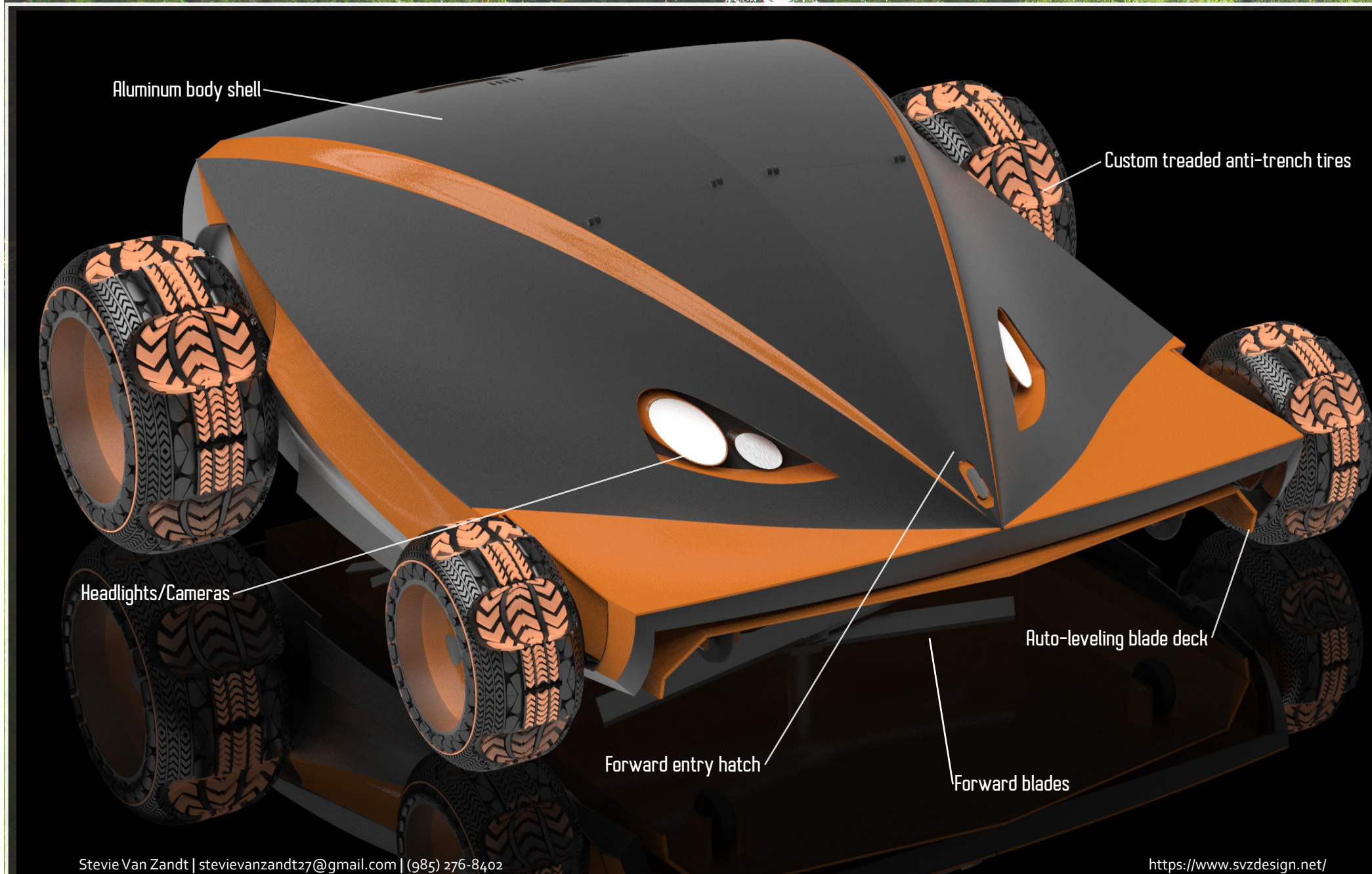
PROWLER GX40 operates using radio frequency technology developed by the creators of the Roomba robot vacuum

Radio beacons would be placed in cutting areas beforehand, creating a two way communication channel with the mower

These beacons, along with the mowing fleets' communications, create invisible fence lines that guide the mowers' path

PROWLER GX40 is also equipped with obstacle detection sensors, live feed cameras, and automatic shutoff fail-safes

FINAL RENDERS

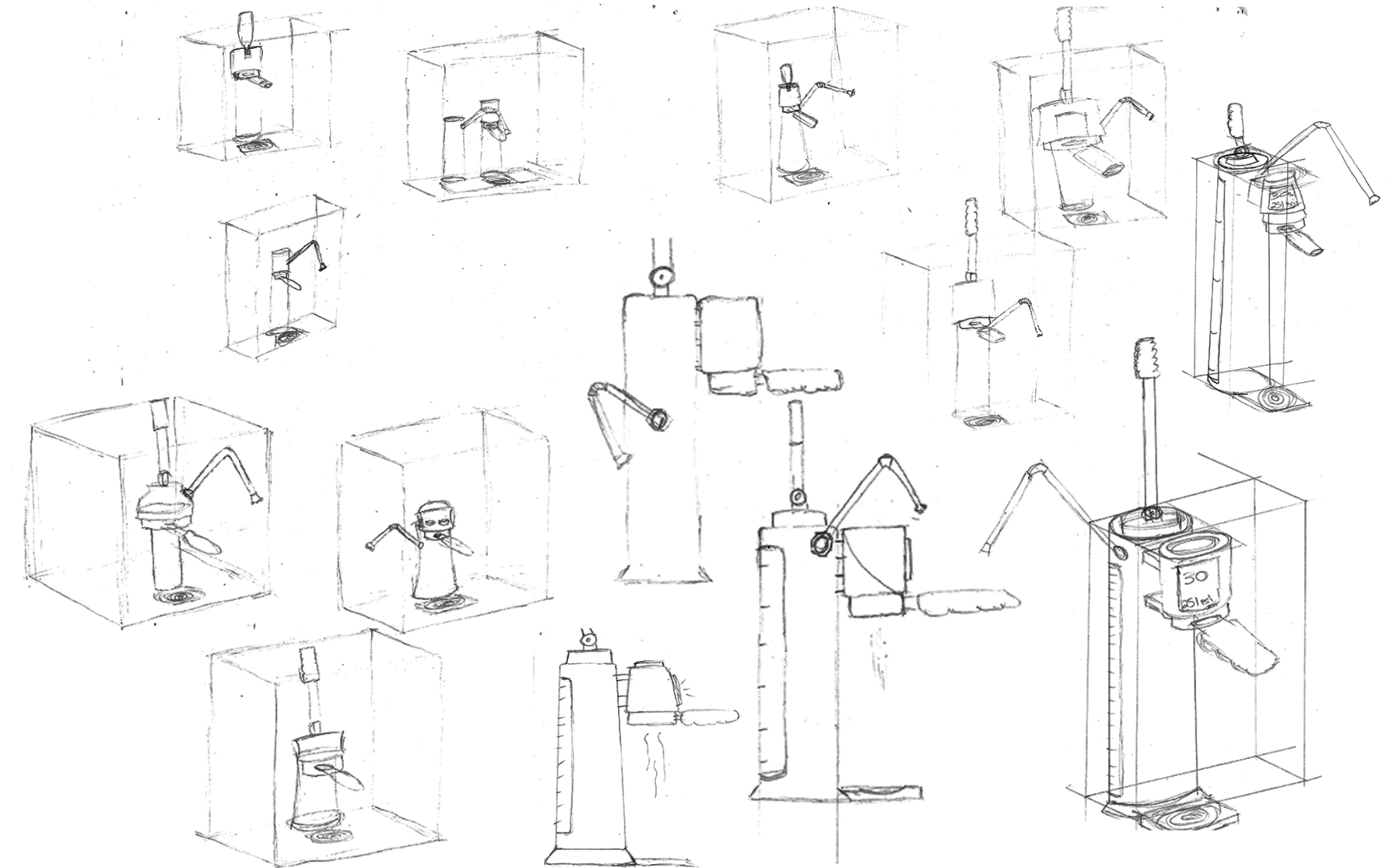


la lucido

all-in-one home espresso system

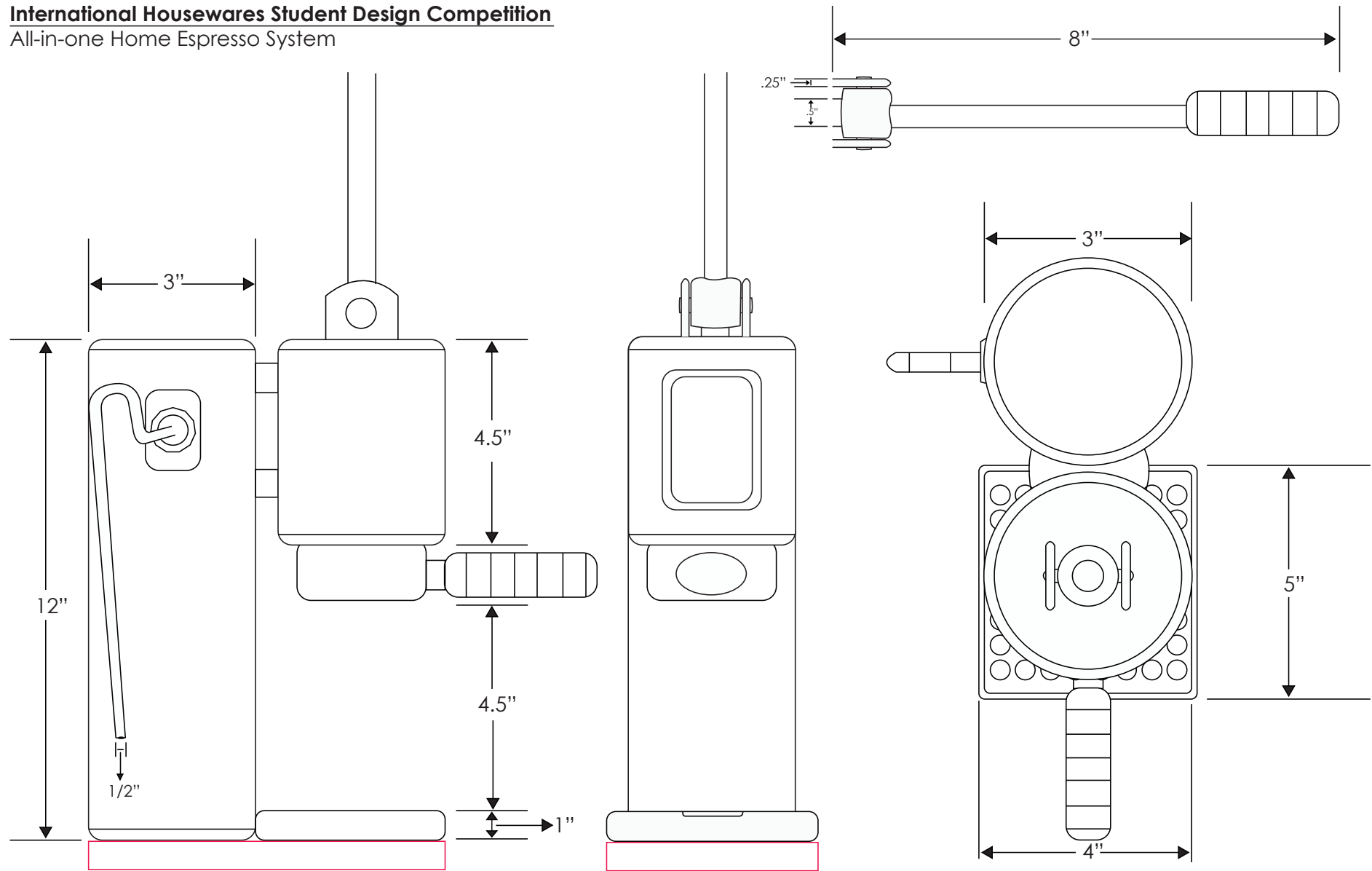
Sketching

- ☞ Coffee is a beverage that brings us all together. For many people, the difficulty of purchasing high quality coffee on a daily basis prevents them from enjoying the drinks they love. Modern at home espresso systems that produce these beverages are often bulky, overpriced, and outdated.
- ☞ la lucido, or "the light", is an at home espresso system that provides users with the ability to steam milk, pull espresso shots, and even rinse their equipment clean while maintaining a sleek, high-functioning modern design
- ☞ With ease-of-use in mind, la lucido is built to be easily installed in the home and operated easily even by amateur baristas.

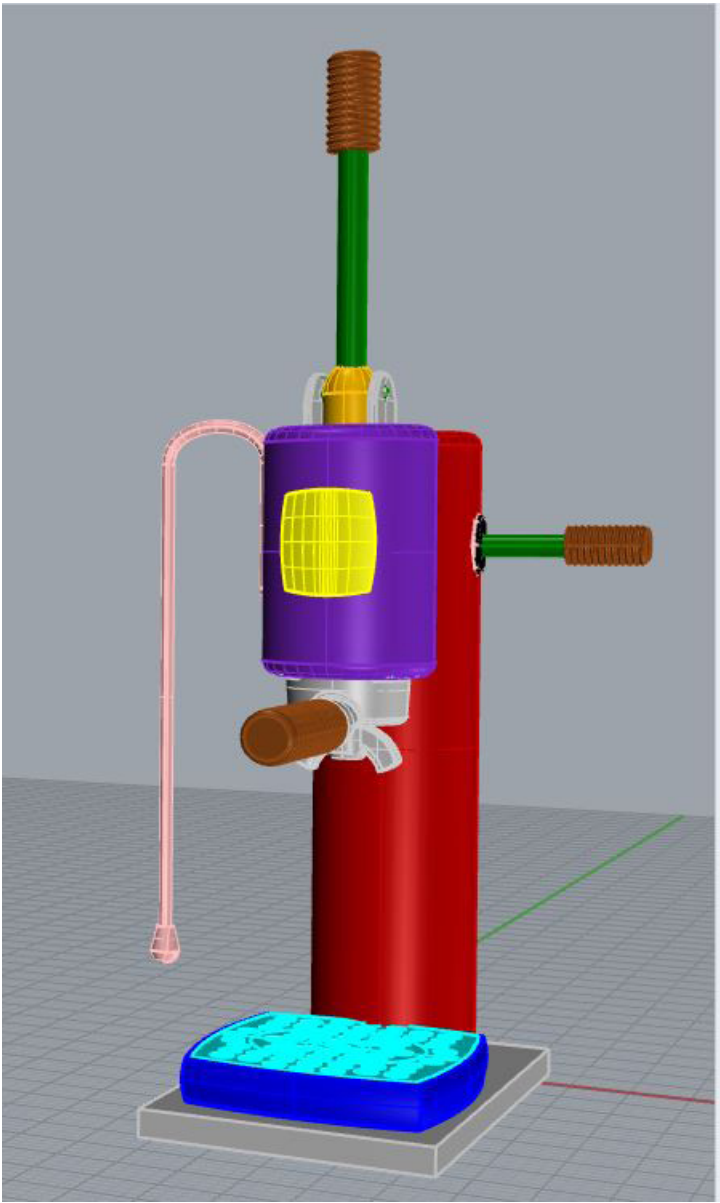
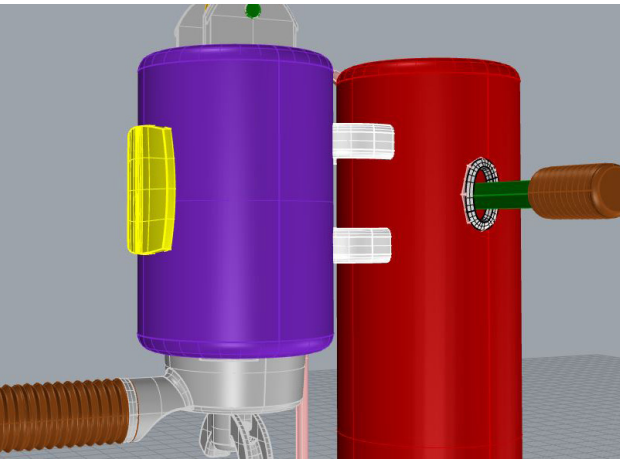
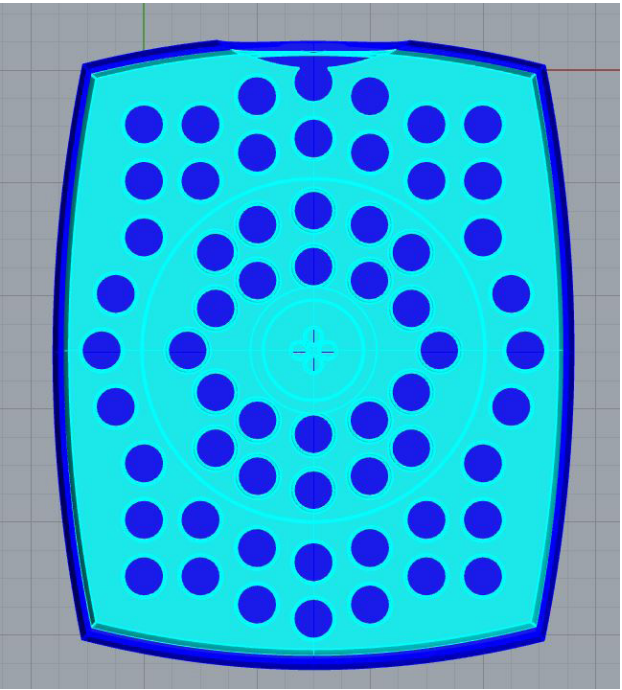


Orthographics

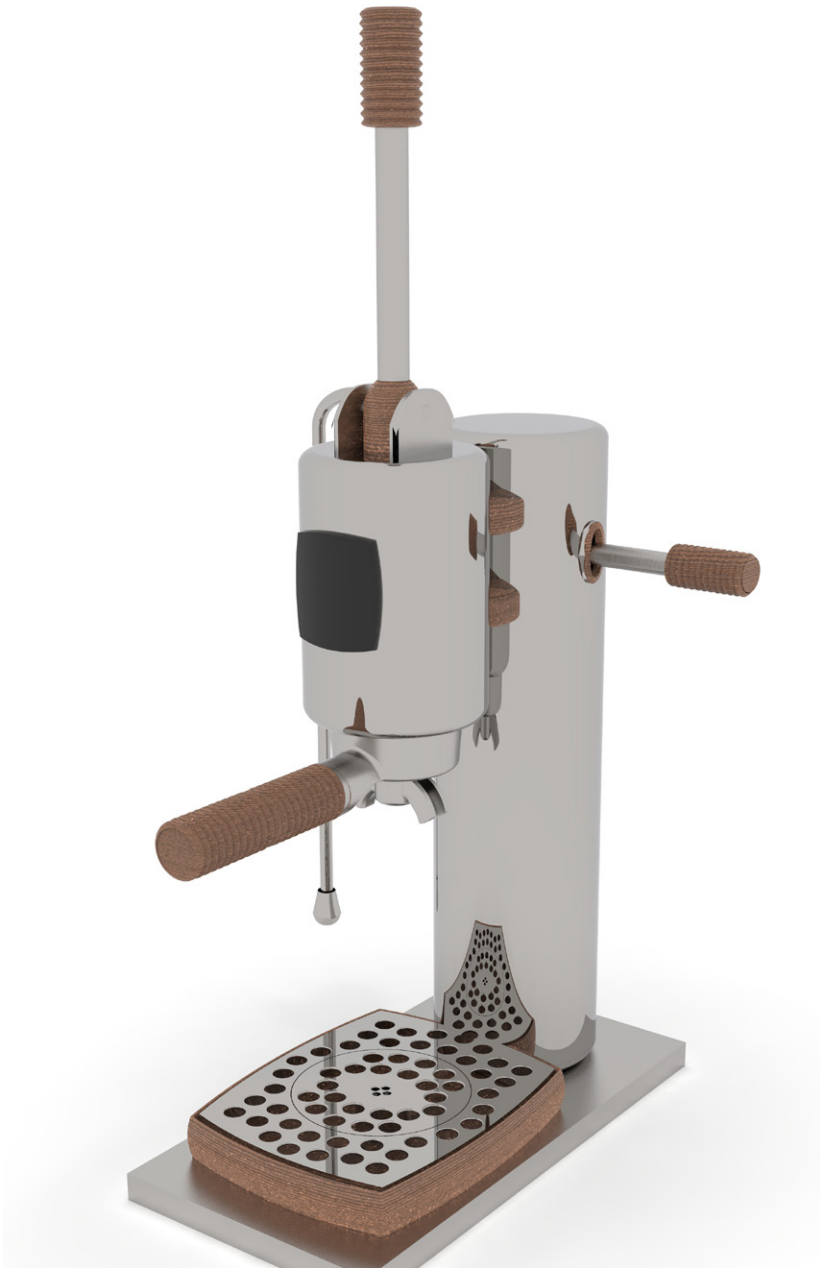
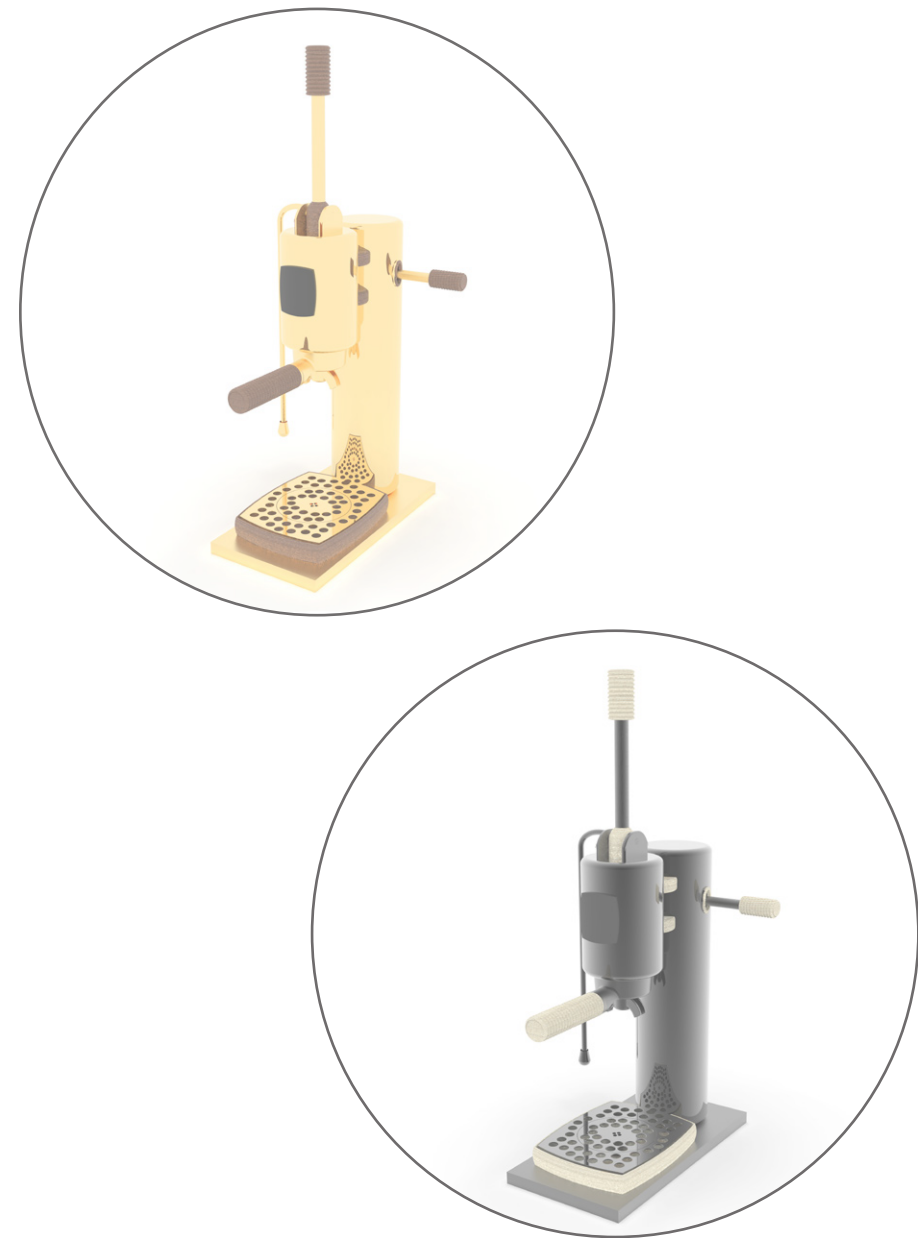
International Housewares Student Design Competition
All-in-one Home Espresso System



3D Modeling

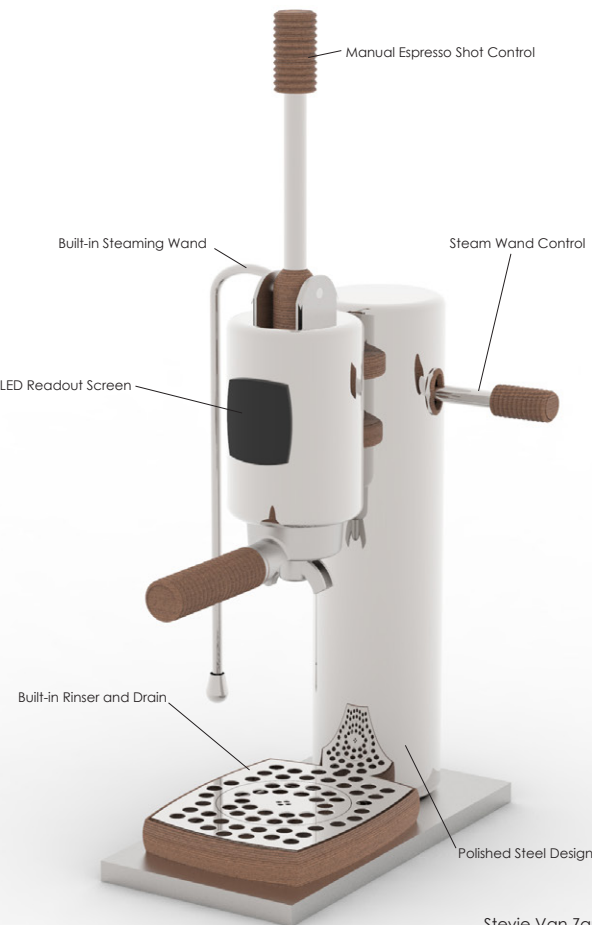
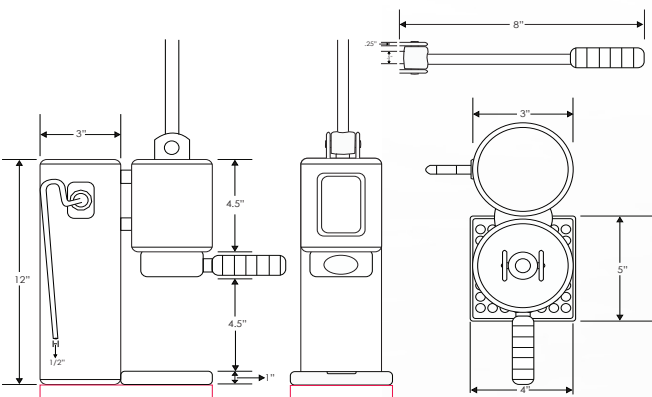
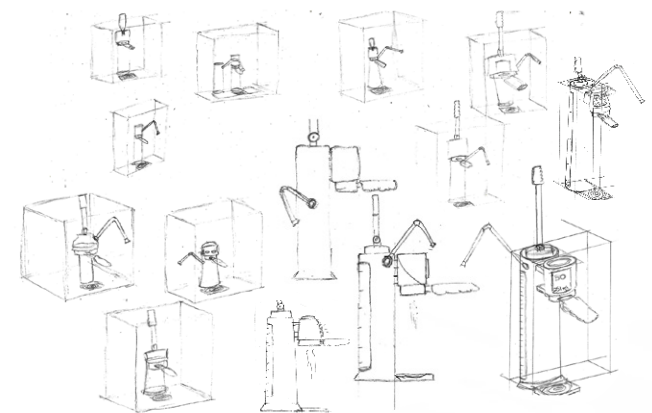


Name		Material
Default	✓	
Screen Baseplate	✓	
Base	✓	
Group	✓	
Drain	✓	
Handle	✓	
Connectors	✓	
Draw Handle	✓	
Wood Handles	✓	
Steaming Wand	✓	
Draw Handle Base	✓	
Draw Handle Mech.	✓	
Portafilter	✓	
Pivot Rings	✓	
Drain Tray	✓	
Screen	✓	
Countertop	✓	
Counter Mount	✓	
Split Shot	✓	



la lucido

all-in-one home espresso system



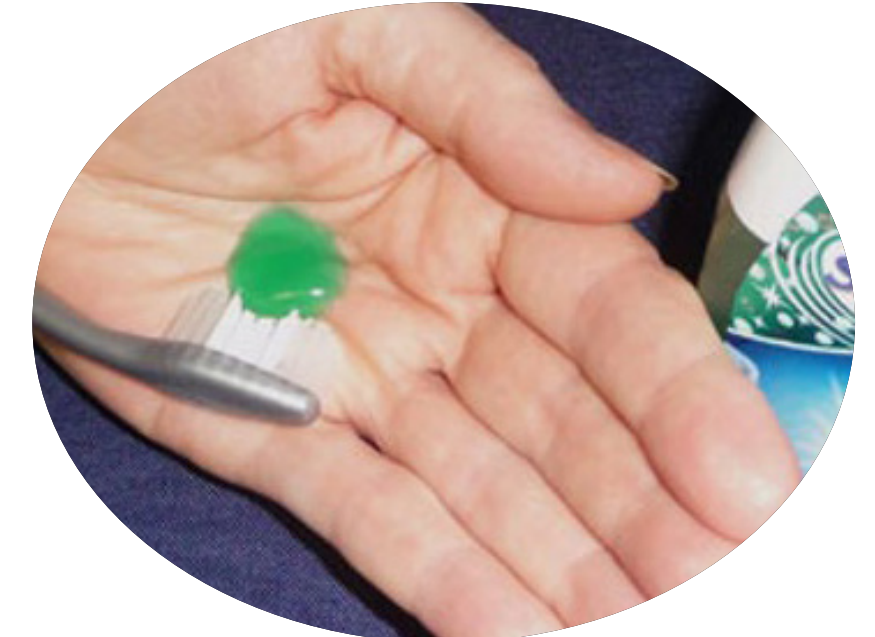
Stevie Van Zandt
UL Industrial Design '20

ClicBrush

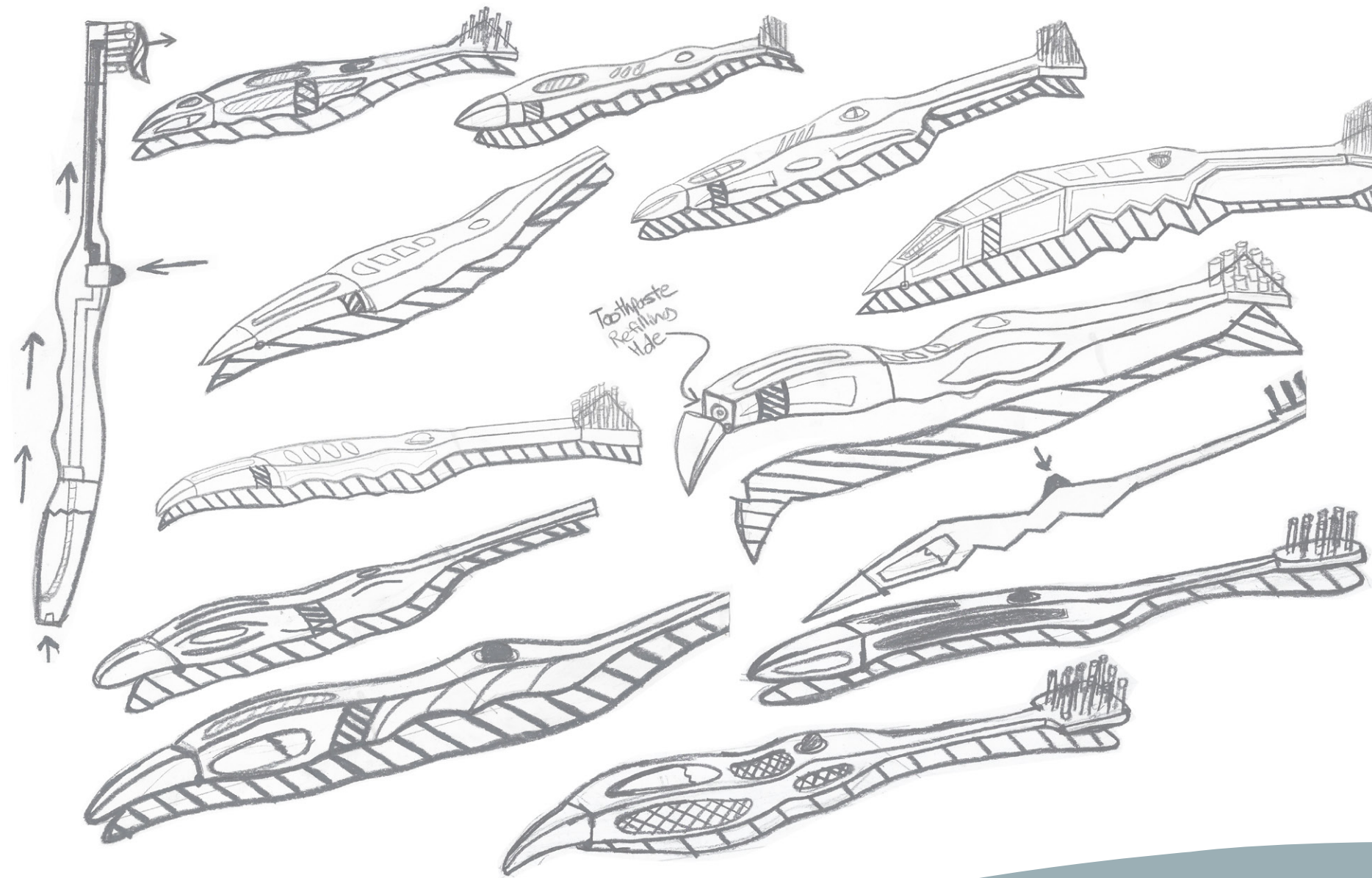
a toothbrush for the visually impaired



~ For those who suffer from visual impairment, brushing your teeth can be a difficult and unsanitary task



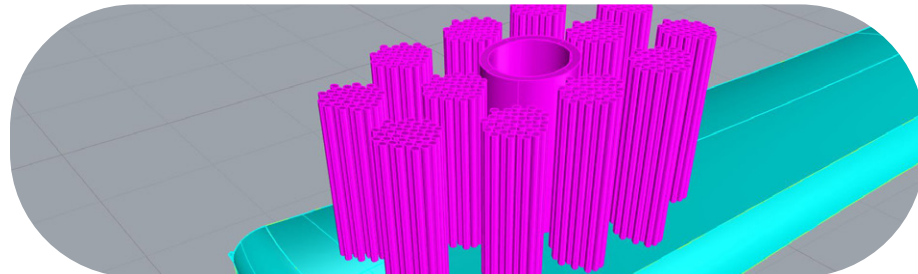
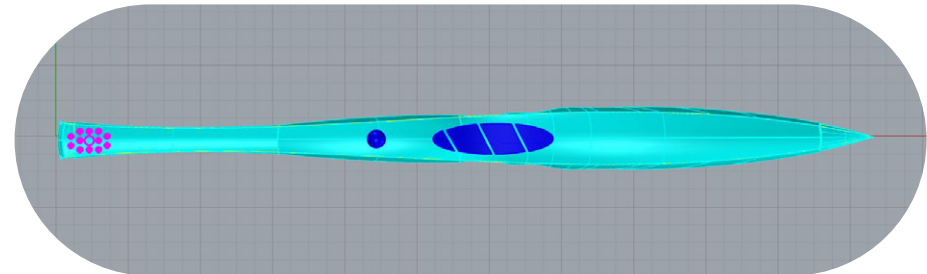
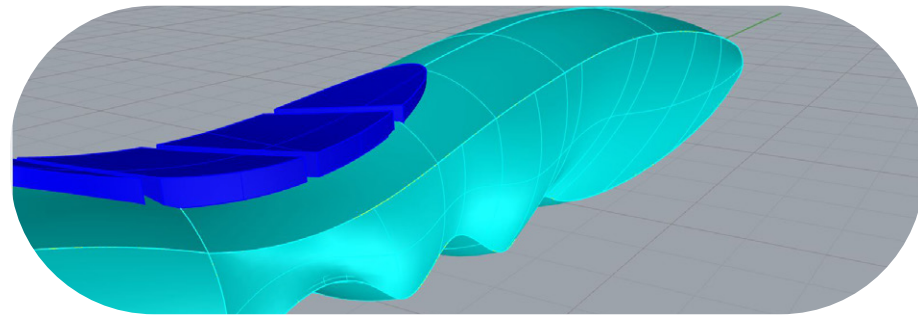
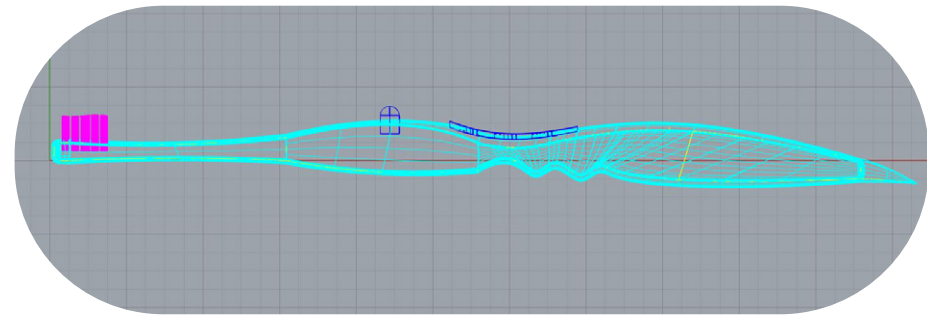
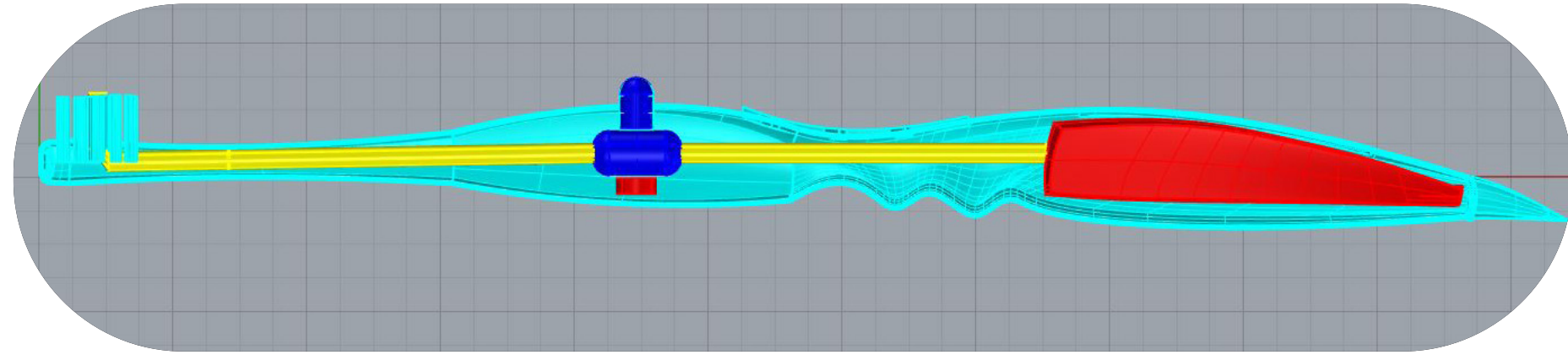
~ Methods shown for those with visual impairment adding paste to the bristles are also unsanitary and ineffective



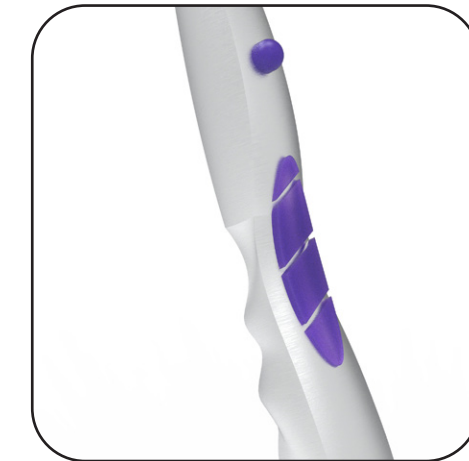
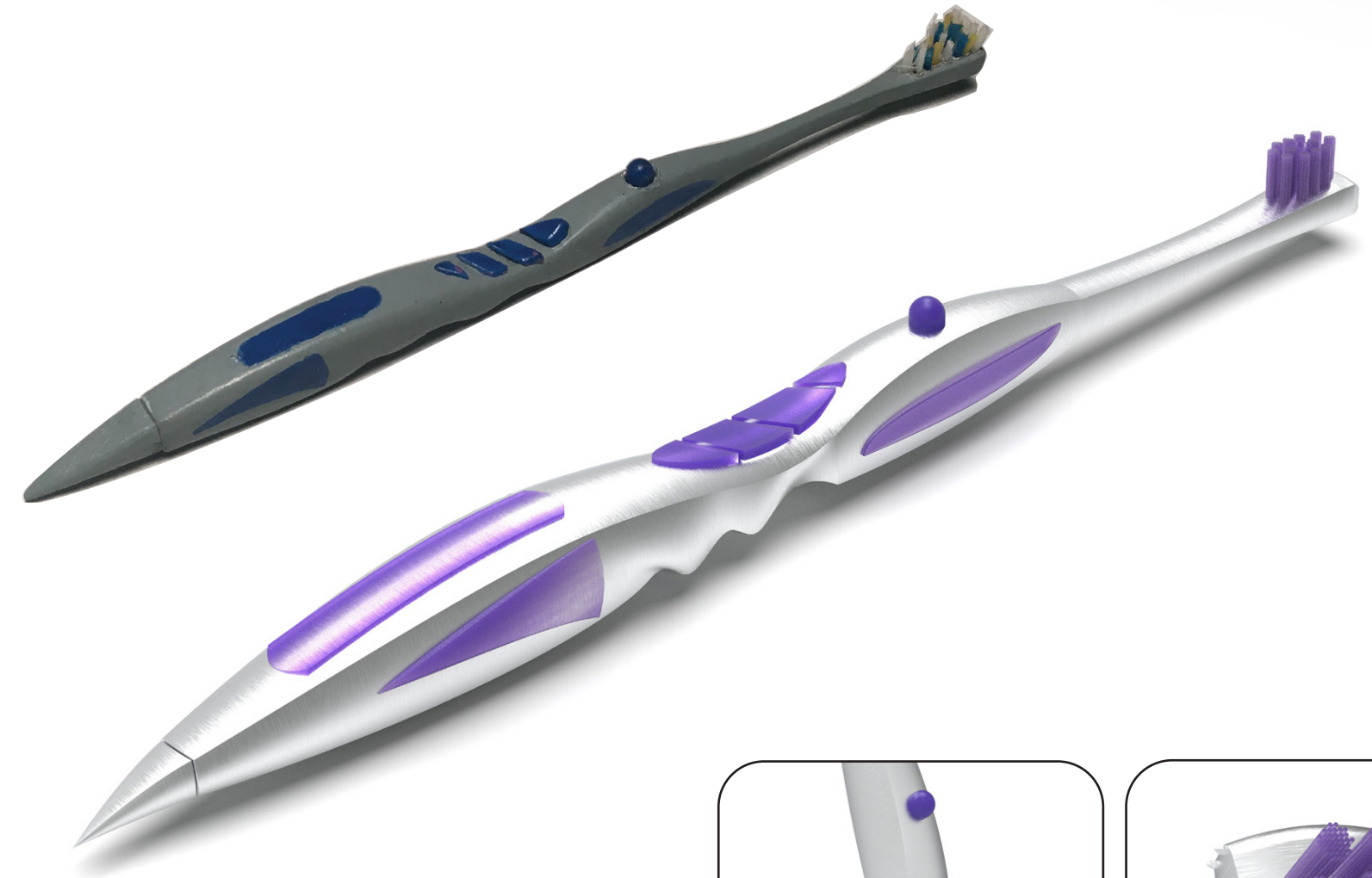
Ideation Sketching
exploring various forms and functions of the brush



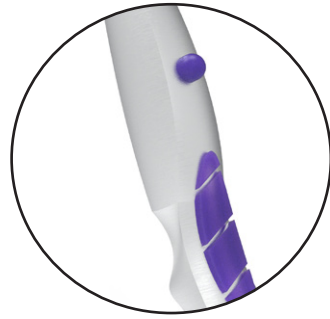
Form Development
testing the ergonomics of the brush's shape



3D Surface Modeling
developing surfaces and internal components



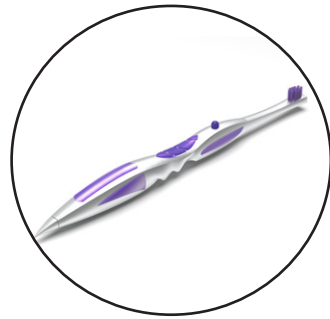
Brush Model & KeyShot Renders
product deliverables in physical and digital form



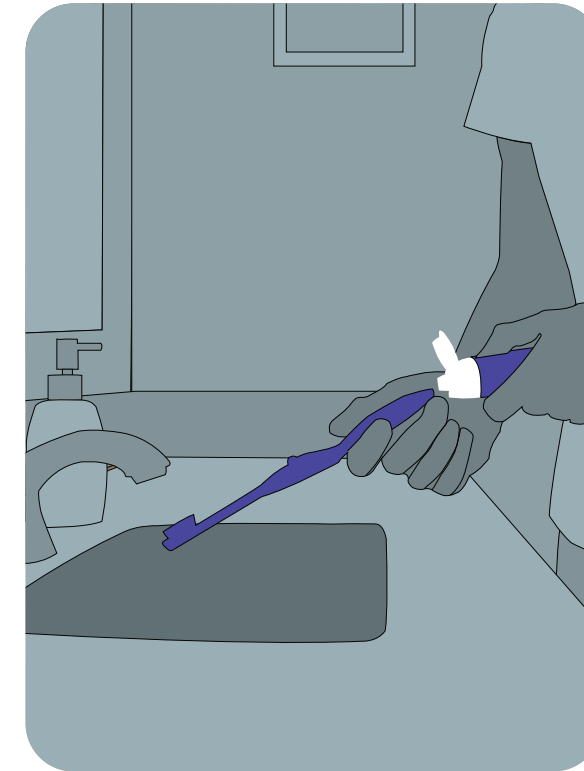
Refill and button systems eliminate the need for adding paste directly to the bristles



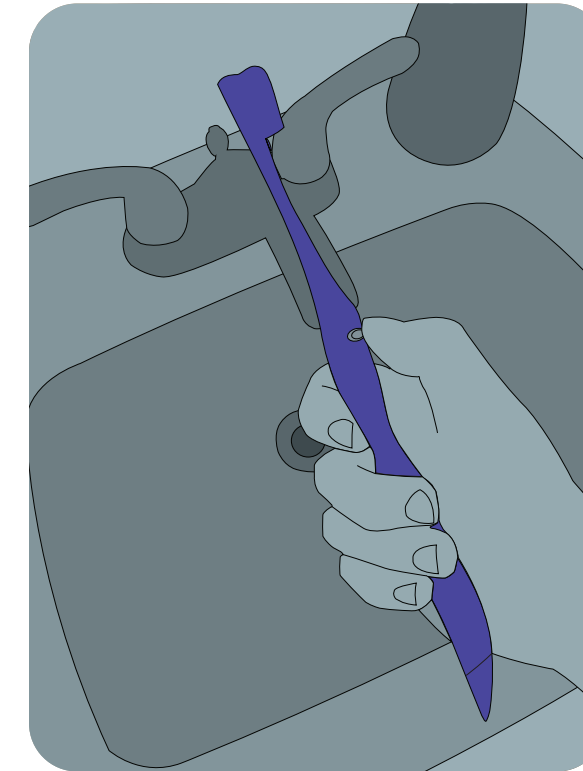
Textured shapes guide those with poor vision to the refilling hole



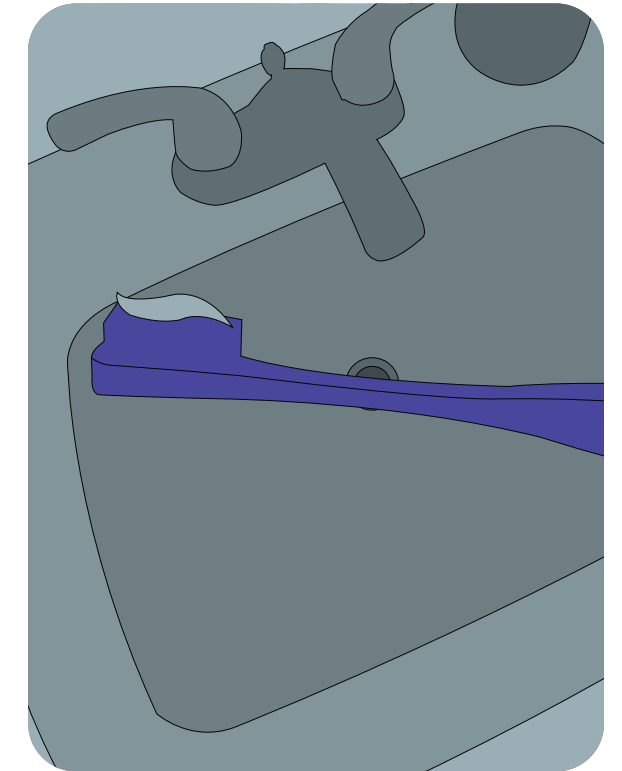
Durable, stainless steel design adds tactility and weight for an easier performance



~ Inject toothpaste from the rear to fill up the paste pod



~ Clic the button 10-15 times to prime



~ ClicBrush ejects the perfect amount of paste every time

Benefits

how ClicBrush aids the visually impaired

Task Analysis

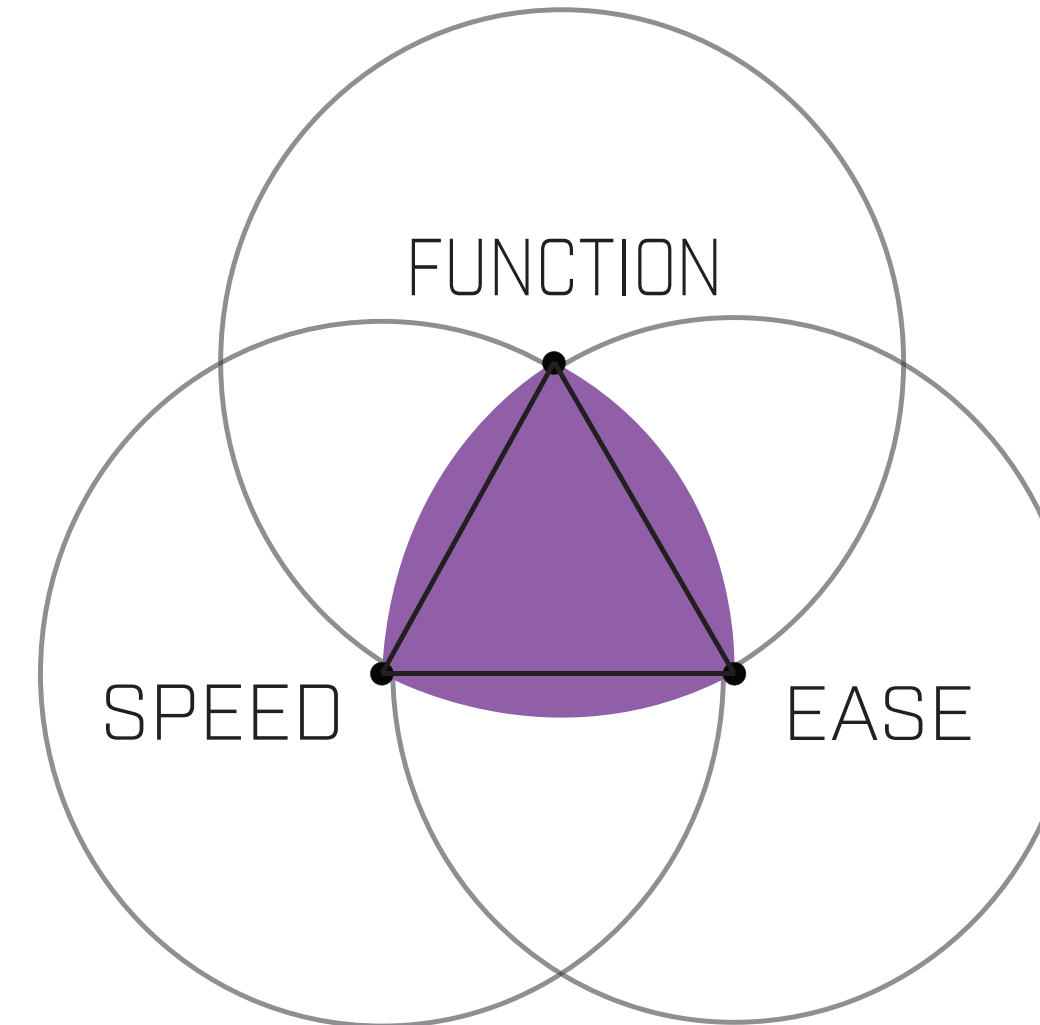
how the brush works



Project Pilot Run 2.0

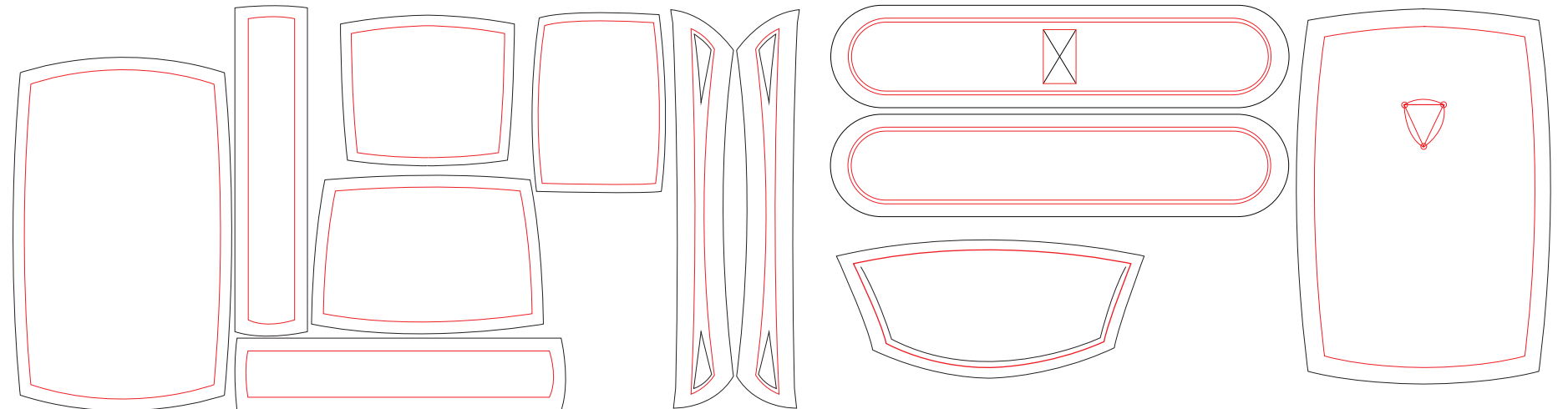
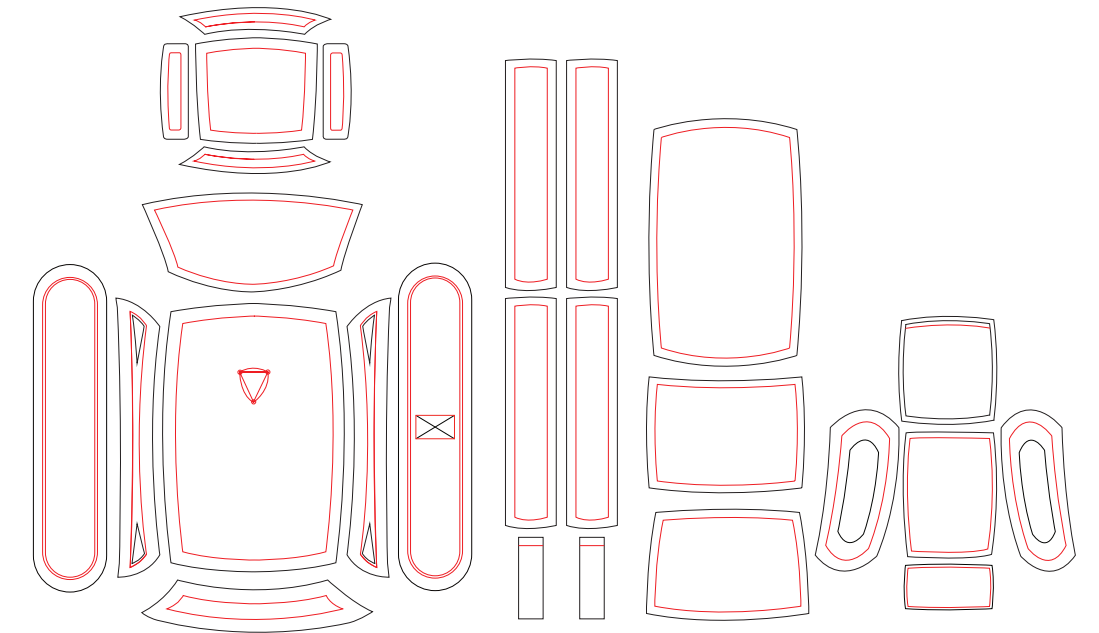
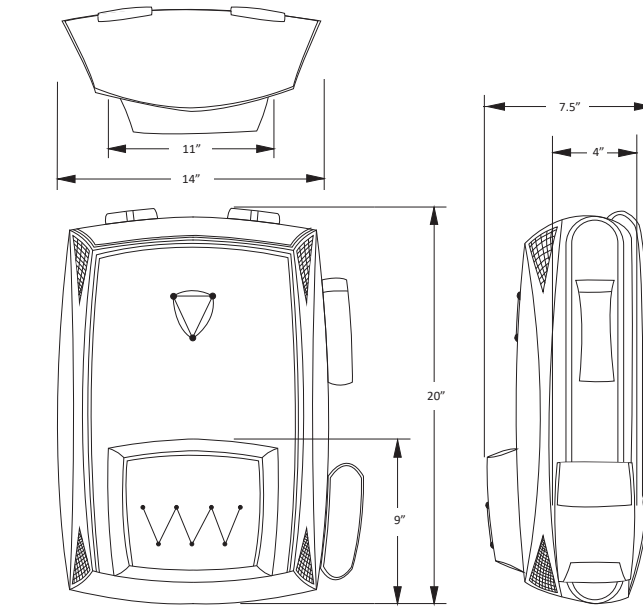
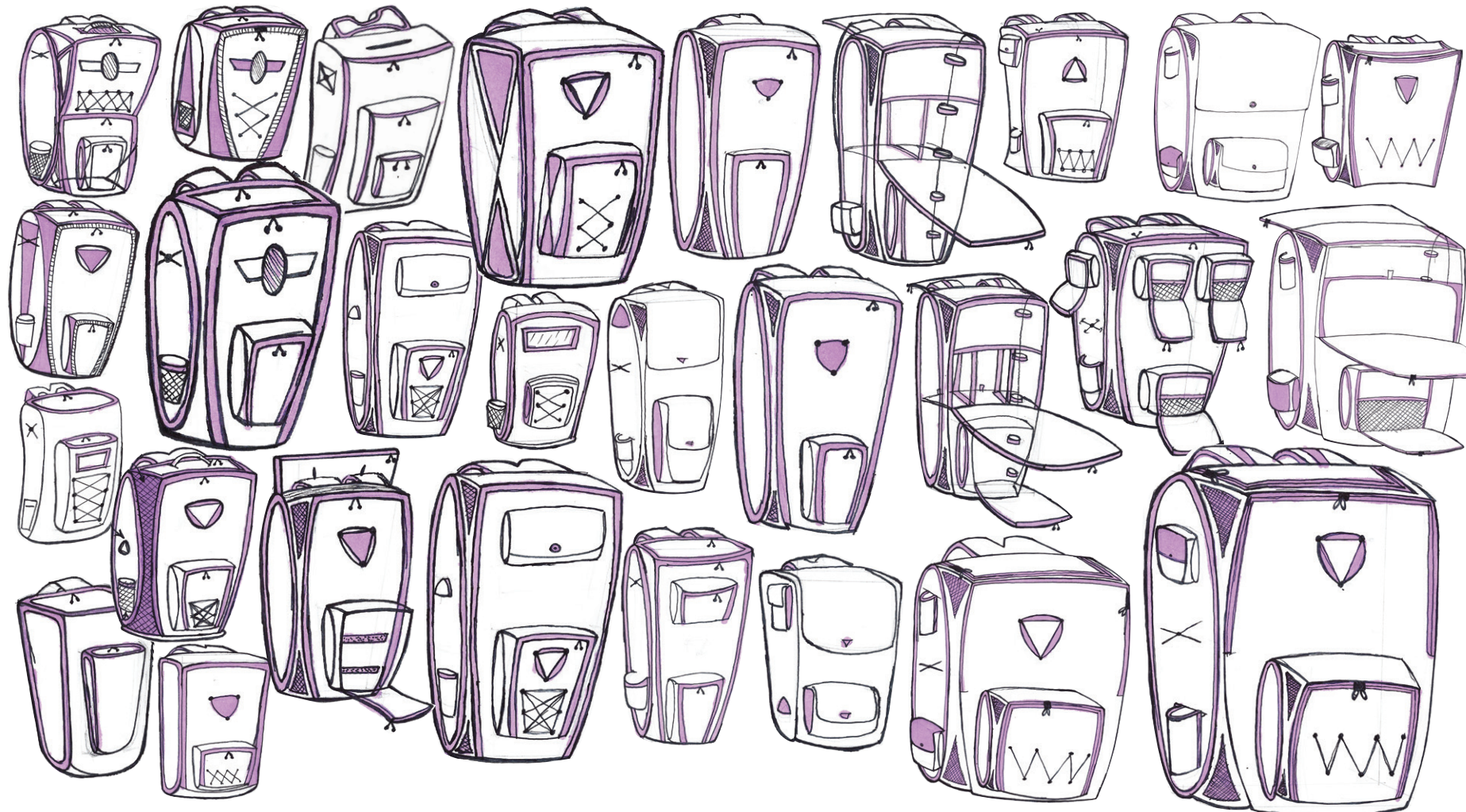
This Red Bull sponsored project aimed to solve the issues associated with mobile streaming and traveling with expensive equipment safely and efficiently

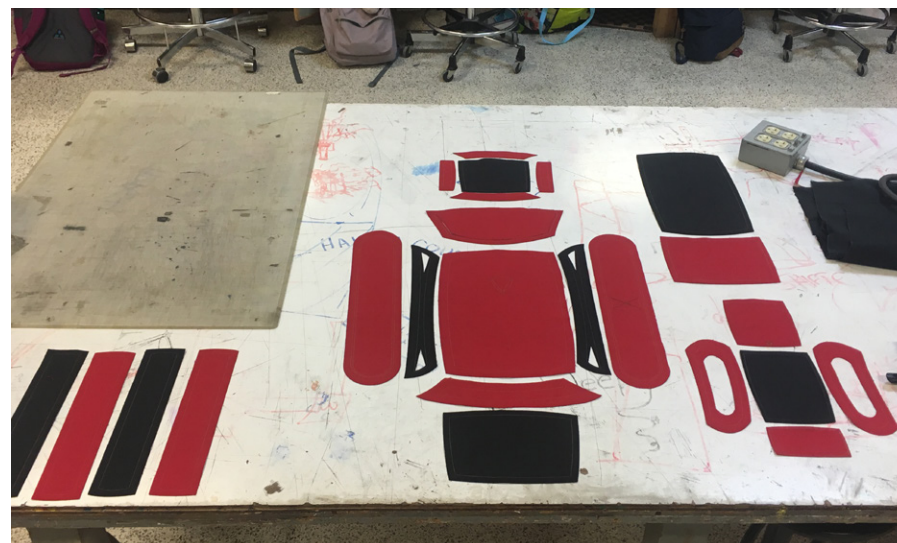
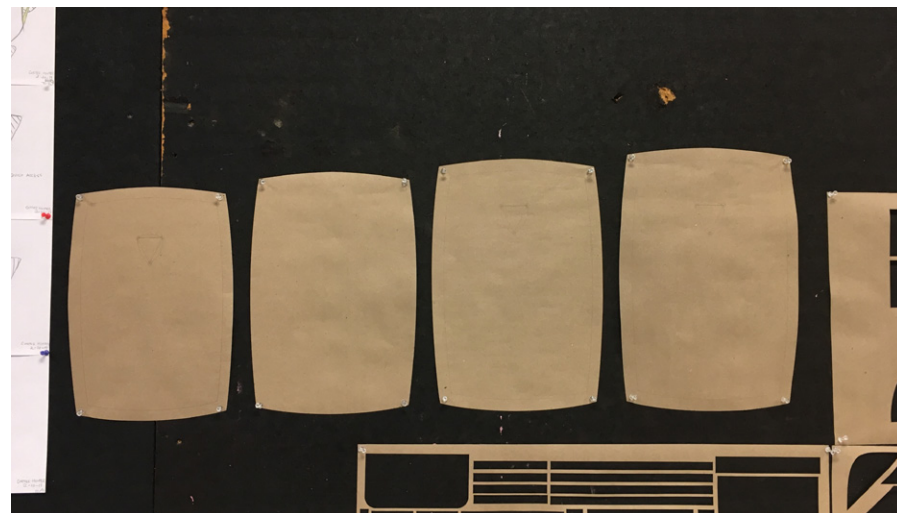
Working first hand with Red Bull and their patron, ZeRo, the world's leading SuperSmash-Bros. player, allowed the project to be designed to their specific needs both aesthetically and physically



REULEAUX Mobile Streaming Bag

- The bag was inspired by the Reauleaux triangle, which is the shape derived from the center of three conjoining circles
- The REULEAUX Mobile Streaming Bag combines Function, Speed, and Ease to create the ideal on-the-go streaming backpack





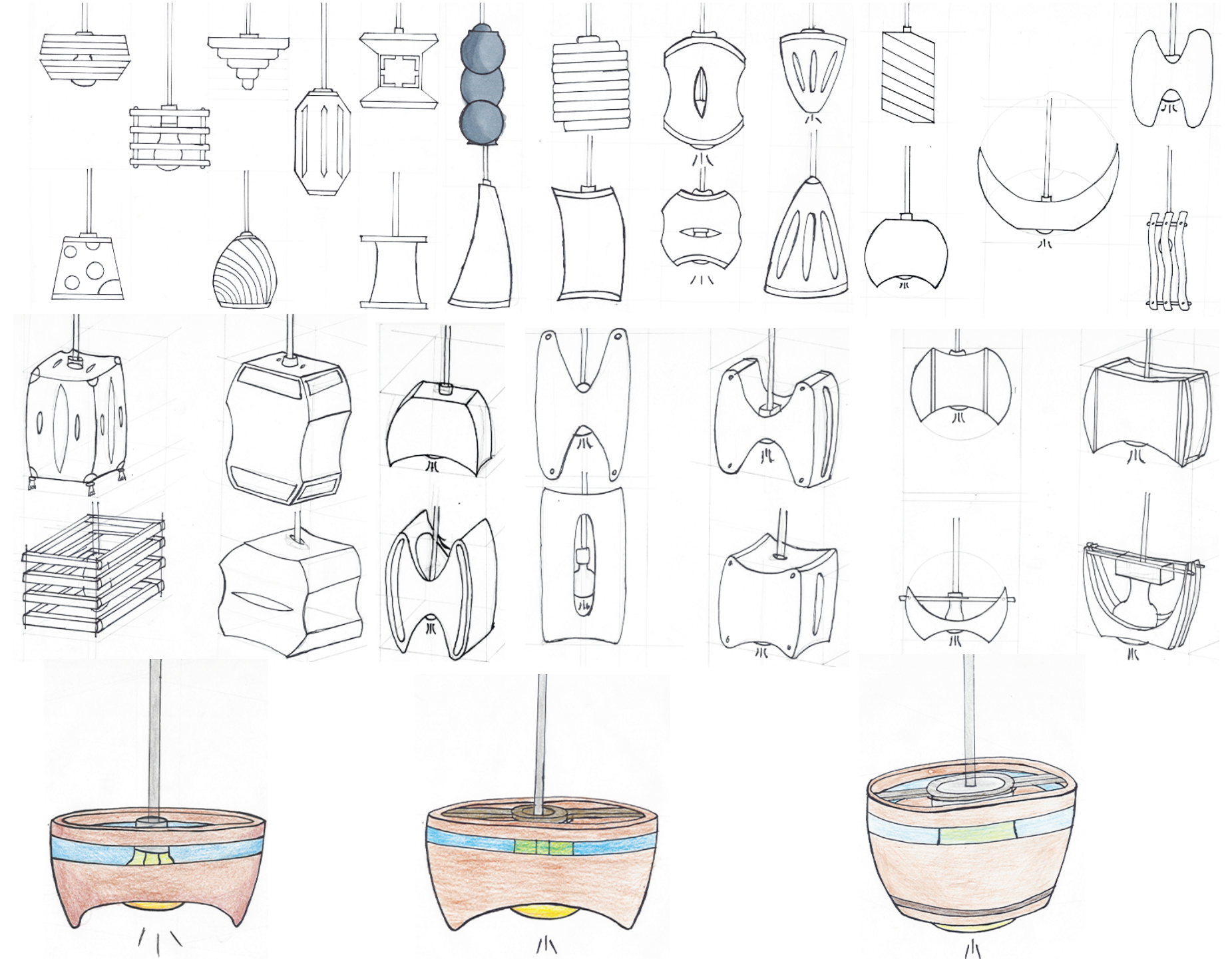
- initial models came out too large and bulky
- this was resolved by a scale test of the main panel and a down scaling of the patterns

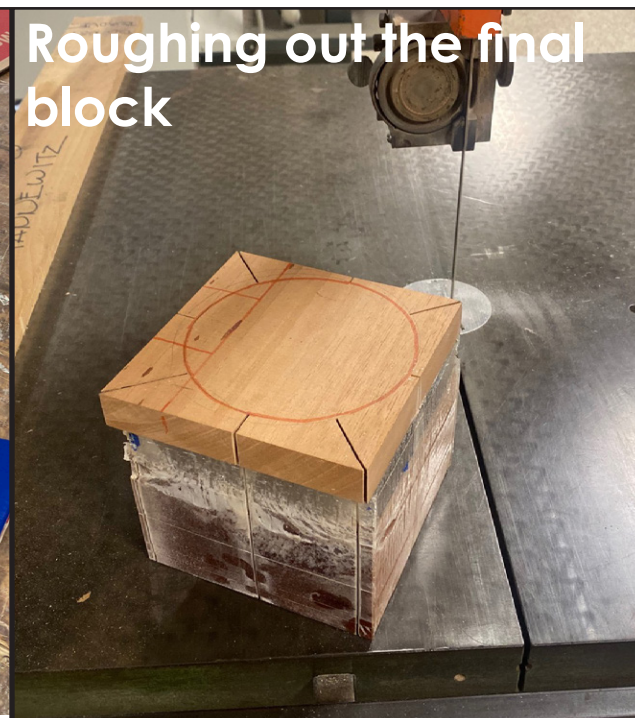




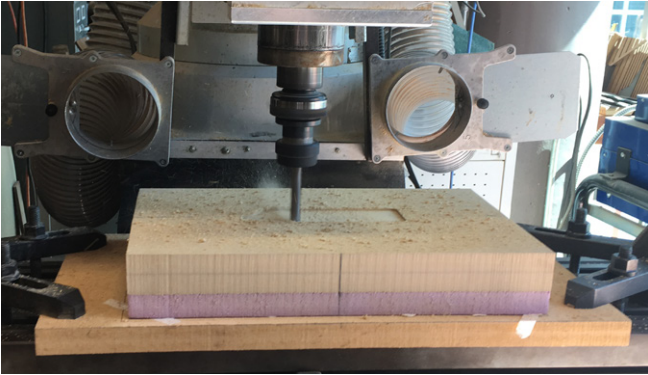
Ikea Lamp Cord Lampshade Design

💡 designing a lampshade to fit a
hanging light-bulb cord

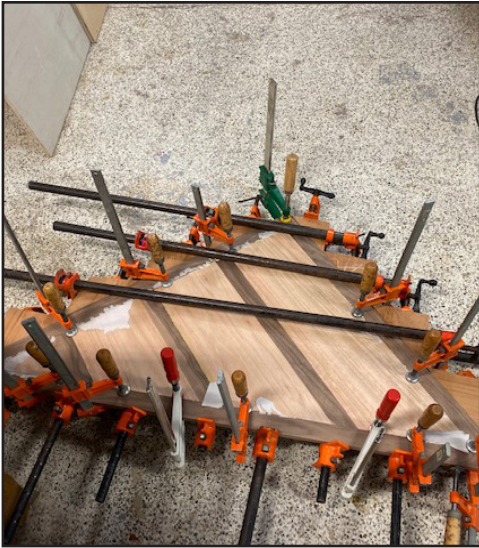




Woodworking



Proficiencies:
Furniture Joinery
Woodturning
C&C Milling
Laminate Work
Surface Finishing
Cabriole Sculpture

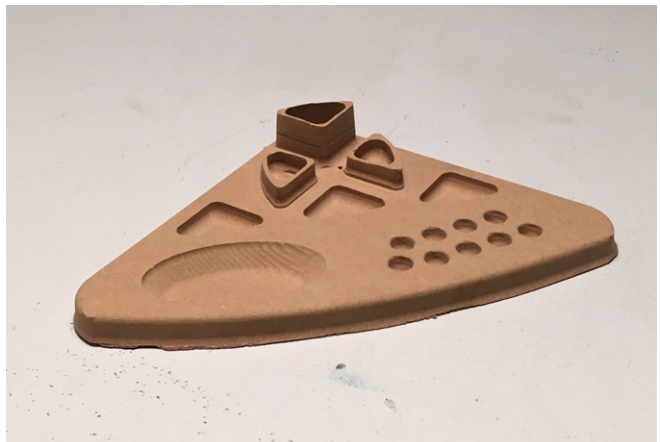


Black Walnut and
Red Cypress TV
Table>

Black Walnut
<Barstool



Craftsmanship



Proficiencies:

Bronze Casting (Lost Wax Method)
Vacuum Forming
Laser Cutting
3D Printing
Sewing

Thank you for taking the time to view my work.
If you have any questions, or would like to speak about
one of my projects feel free to contact me at my email or
phone number, both of which are listed at the bottom of
each page of this document.

- Stevie Van Zandt